



PERFORMANCE APPAREL

SPRING / SUMMER 2016

Technical Product Workbook

GUL WORLDWIDE

UNITED KINGDOM -

Gul Watersports Ltd

ADDRESS:

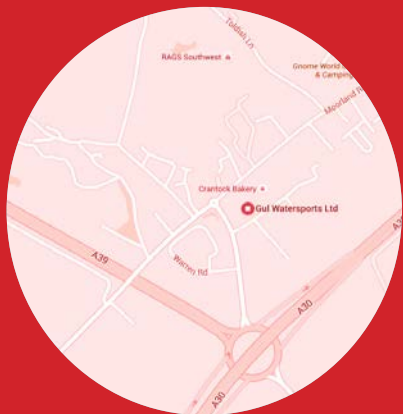
*Indian Queens, Cornwall
TR9 6TF*

UK : +44 (0) 1208 262 474

Fax: +44 (0) 1208 262 474

EMAIL: *info@gul.com*

WEB: *gul.com*



AUSTRIA -

Kiteboarding CZ

www.kiteboarding.cz

AUSTRALIA -

NZ Sailing

www.nzsailing.net

BELGIUM -

Johan Smit

0031653973786

BRAZIL -

G1 Esporte

www.gul.com.br

BULGARIA -

Sunny X3m Ltd

LZ Yachtshop LTD

CANADA -

Stright-Mackay

www.stright-mackay.com

CANARY ISLANDS

-

Cutre Windsurf Centre

www.cutre.com

CHILE -

Sieteveinte Ltd.

www.720.cl

CHINA -

Beijing Sailing

www.beijingsailing.com

CZECH REPUBLIC -

Kiteboarding CZ

www.kiteboarding.cz

DENMARK -

Surfline

www.surfline.dk

ESTONIA -

Lukase Invest ou

www.surfshop.ee

FINLAND -

Sailman

www.sailman.fi

FRANCE -

Sea-Up

www.sea-up.com

GERMANY -

Kiteboarding CZ

www.kiteboarding.cz

GREECE -

Forward

www.forward.gr

HOLLAND -

Johan Smit

0031653973786

HONG KONG -

Sportek

www.sportekcompany.com

ICELAND -

Gummibatar

www.gummibatar.is

IRELAND -

Chris Currie

www.gul.com

ISRAEL -

Ocean Nation

www.ocean-nation.com

ITALY -

Alevela

www.gulitalia.com

KOREA -

Linknet Corp

LITHUANIA -

Marinera Uab

www.sailing.it

LUXEMBOURG - (BENELUX) -

Johan Smit

0031653973786

NEW

ZEALAND -

NZ Sailing

www.nzsailing.net

NORWAY -

Surf School

Norway

www.surfschool.no

PERU -

Chicama

bbc-chicama@terra.com.pe

POLAND -

Funwind

www.funwind.com.pl

PORTUGAL -

Waveportugal waveportu-

gal@mail.telepac.pt

Sailloft LDA

www.velaria.net

RUSSIA -

Boardsoul

www.boardsoul.ru

SINGAPORE -

Seamate

www.seamate-guldivers.com

SLOVENIA -

Kler

pletinautica@gmail.com

SOUTH AFRICA -

CMB Agencies

www.cmbagencies.co.za

SPAIN -

Nautilus

www.nautilus24.com

SWEDEN -

One Design Cente

www.onedesigncenter.se

SWITZERLAND -

H2O Sensations

www.h2o-sensations.com

TAIWAN -

Rudy Wolf

www.rudywolf.com.tw



CONTENTS

Gul Technical Apparel S/S 2016

TECH GUIDE 3-13

SURF

VIPER	16-17
FLEXOR III	19
RESPONSE FX	21 -23
RESPONSE	25-35
SURFLITE	37
SEASPRAY	38

FLEXOR HOODY	38
RESPONSE JACKET	39

SAIL

CODE ZERO SAILING SUIT	41-42
CODE ZERO LONGJOHN	43-44
CODE ZERO TROUSER	44
CODE ZERO HYBRID	45
CODE ZERO SOFTSHELL	45

MARINE

CODE ZERO DAY RACEWEAR	47
COASTAL VIGO	48
SPRAY TOPS	49-52
PROPADS	53
HIKERS	54
TRAPEZE HARNESS	55
KNEE PADS	56

CREW KIT 57-61

LAYERS

CODE ZERO THERMO TOPS	63
VIPER RECORE	63
EVOTHERM	64-66
RACEBIB	67
CODE ZERO PRO	67
HYDROSHIELD LONG JOHN	67
HYDROSHIELD	68-69
POWERMATRIX	69
VEST & SHORTS	70

RASHGUARDS

XOLA	72
SWAMI	73
JUNIOR	74-75
SUNSUIT	76

BOOTS & FOOTWEAR

BOOTS & SLIPPERS	77-80
SOCKS	81
DECKBOOTS & SHOES	82
AQUASHOE	83
HYDROSHOE	83

ACCESSORIES

GLOVES	85-89
HOODS & HATS	89
GAITER & BEANIE	90
ROOF STRAPS & PADS	91
DRYBAGS & LUGGAGE	92-94
BUOYANCY AIDS	96-98
KAYAK	99-100
MASK & SNORKEL	102-103
SUNGLASSES	104-105

G-FORCE 107-110

BODYBOARD

VIPER	112
FLEXOR III	112
RESPONSE	113
RESPONSE	113
SEASPRAY	113

SURFBOARDS

LONGBOARD	115
MINI MAL	115
GOLDEN NUGGET	116
MOD FISH	116

POS 117

WETSUIT FITTING GUIDE	119
SIZECHART	120-124

CONSTRUCTION

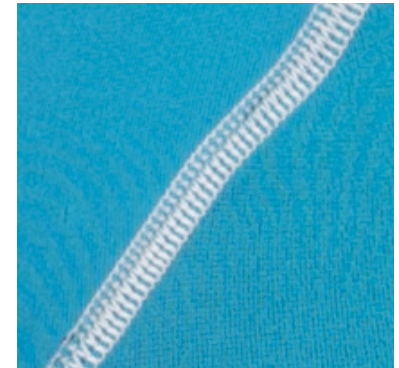
Tech Guide

NEONSEAM

liquidseam
SILICON SEALED SEAMS

BLINDSTITCH
OPTIMUM SEAM CONSTRUCTION
WATERTIGHT & COMFORTABLE

Flatlock
FLEXIBILITY & COMFORT
CONVENTIONAL SEAM CONSTRUCTION



● NEONSEAM

Construction

Panels are glued and blindstitched then sealed with a 4mm razor thin coloured liquid silicon based urethane. The result being a strong yet flexible seam that is watertight and durable whilst reducing the abrasion to skin.

● LIQUIDSEAM

Construction

Panels are glued and blindstitched. The seam is then sealed using a coloured liquid silicon based urethane which reinforces the seam giving each suit a 100% water seal.

● BLINDSTITCH

Construction

Panels are double glued and then butted together followed by stitching that does not penetrate all the way through the neoprene. Inside the wetsuit, heat welded tape goes over the seams in high stress areas, which further strengthens the seams.

● FLATLOCK

Construction

Neoprene is lapped together and then stitched, creating a flat, flexible and comfortable seam. Flatlock stitching can be identified by a band of interlocked thread on both sides of the wetsuit, sometimes utilising a coloured thread for visual effect.

NEOPRENE

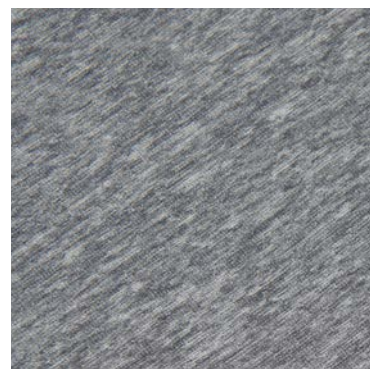
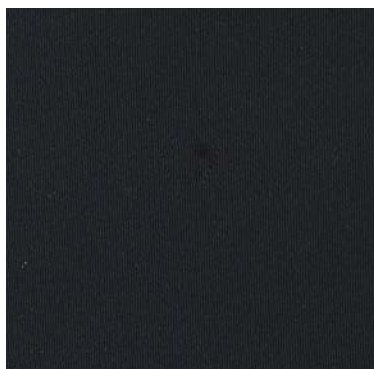
Tech Guide

RS-FLEX
RAPID-DRY • SUPER-STRETCH

X-FLEX
SUPREME NEOPRENE FLEXIBILITY
X-FLEX
THERMOSPAN
THERMAL STRETCH INSULATION

i-FLEX

G-FLEX
WARMTH.FLEX.STRENGTH



● RS-FLEX

Neoprene

Our latest evolution in neoprene!

150% Textured Stretch Neoprene, 20% lighter 30% less water absorption than X-Flex.

● X-FLEX ● X-FLEX THERMAL

Neoprene

150% stretch neoprene is used in our high performance wetsuits. The latest X-FLEX neoprene is 10% lighter, absorbs less water and has a softer, more comfortable feel.

● i-FLEX

Neoprene

Fashion meets function! 150% stretch neoprene is used in our high performance sailing wetsuits. Offering the same properties as X-Flex with a softer feel.

● G-FLEX

Neoprene

100% stretch neoprene giving unrestricted range of movement and warmth.

NEOPRENE

Tech Guide

FlexTex
heavy duty x-stretch

D.FLEX
DURAFLEX NEOPRENE

DURA-TEX
ULTRA DURABLE NEOPRENE

PowerTex
heavy duty stretch



● **FLEXTEX**
Neoprene

Highly abrasion resistant triple knit neoprene. Provides high levels of durability combined with excellent stretch characteristics.

● **D-FLEX**
Neoprene

50% stretch neoprene. Flexible, warm, durable neoprene allowing you to perform for longer.

● **DURATEX**
Neoprene

Highly abrasion resistant Dura-Tex nylons are created by applying a resin coating to the outer surface of a double knit nylon. Increases resistance to abrasion by up to 4-5 times.

● **POWERTEX**
Neoprene

Four way stretch high specification knee panels designed to resist the most harsh elements while providing maximum flexion and extension of the knee.

FEATURES

Tech Guide

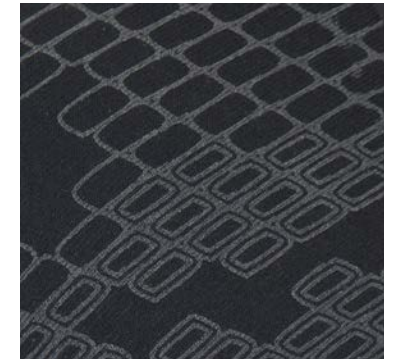
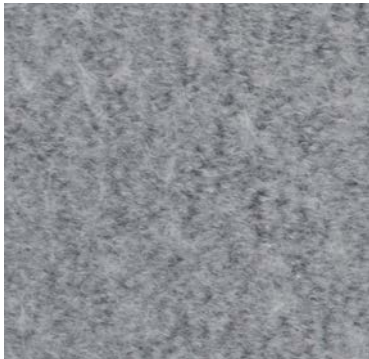
BOLT DRY
THERMAL WICKING CORE

TITANIUM 2
NEOPRENE
REFLECTS THE TRANSMISSION OF BODY HEAT BACK IN

LIGHTWEIGHT THERMAL INSULATION
THERMOSPAN
WICKS MOISTURE & LOCKS IN WARMTH

AERO-COMB
TRIPLY INSULATION

SNAKESKIN
PROTECTION



● **BOLT DRY**
Features

Introducing BOLT DRY, Guls' exclusive fastest drying neoprene yet. The ultra quick dry core wicks water away from the skin creating a cushion of air between the body and suit, giving ultimate insulation and warmth.

● **TITANIUM 2**
Features

Used in the main body panels of most of our wetsuits. T2 neoprene acts in a similar way to a survival blanket, and reflects body heat back to the body.

● **THERMOSPAN**
Features

Engineered by our scientists so that your core body temperature locks in the heat. By wicking away your body moisture the lightweight thermal insulation traps warm air all around you, keeping your core body warm helping blood to pump around your body creating your own central heating system.

● **AERO-COMB**
Features

Aero-Comb minimises weight while maximising its internal area, this space allows trapped air to heat up and insulate your core.

● **SNAKESKIN**
Features

Durable, water repellent and anti-abrasive membrane applied to outer nylon. This technology is guaranteed to be harder wearing, absorb less water and contain quick drying properties.

FEATURES

Tech Guide



● MESH

Features

Optimum core wind chill protection by absorbing solar heat and reducing evaporative cooling.

● G-TAPE

Features

Inner waterproof X-Flex taping fuses seams together for additional reinforcement.

● GLIDESKIN

Features

Allows you to slip in and out of your wetsuit with ease and comfort. The flexible rubberised coating means you won't get painful rubbing around your neck, allowing you to surf, sail and exercise in the water all day without irritation.

● AQUARING

Features

Wrist seals to reduce water penetration whilst increasing comfort.

● KEY POCKET

Features

Streamline lower calf key pocket with drain hole and key loop.

FEATURES

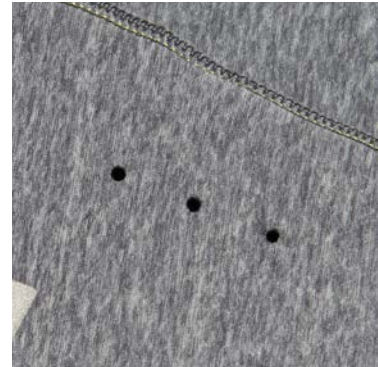
Tech Guide

AIR-PRENE
BREATHABLE NEOPRENE ●●●



FLOW
DRAINAGE SYSTEM

S SHIELD
SHOCK PROTECTION



● AIR-PRENE

Features

Airprene Neoprene is a perforated foam combined with a double Nylon shell. Providing multidirectional airflow keeping your back cool no matter how long you are on the water.

● P-EAZY

Features

P-Eazy is a discrete hidden relief aid, a new development in our Code Zero sailing wetsuits. Designed for ease and comfort, alleviating the need for a zip, improving stretch over and around the groin and torso area.

● FLOW

Features

Drainage System prevents water ballooning in areas where water build up is a common issue.

● S-Shield

Features

New to our Code Zero sailing suit range. S-Shield is a lightweight yet durable addition to our existing powertex knees. Designed to offer optimum protection in a high impact area.

WETSUIT ENTRY SYSTEM

Tech Guide

QUADRATE
ENTRY SYSTEM



UBS
FLUSH
BARRIER

S-LOCK
FLUSH
BARRIER



● QUADRATE

Wetsuit Entry System

This horizontal bib front entry system contains a micro blackout low profile waterproof chest zip. The glideskin seals and the concealed bungee cord keeps water out. Eradicating the back zip gives extra stretch to the back of the suit. A snaplock ensures that the zip pull stays in place.

● ABS

Wetsuit Entry System

This diagonal zip entry system, has a single sided opening reducing flush. The glideskin seal and bungee cord / barrel lock keeps more water out. A snap lock ensures that the zip pull stays in place.

● UBS

Wetsuit Entry System

Internal barrier shield prevents water penetration whilst increasing insulation and maintaining the wetsuits flexibility.

● S-LOCK

Wetsuit Entry System

This easy entry back zip system contains a blackout waterproof zip. The zip is concealed by a unique twin flap smoothskin seal creating a flush barrier without the bulk of the UBS system.

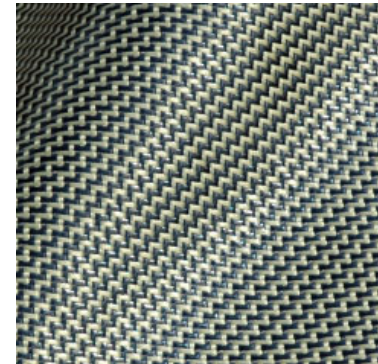
PROTECTION

Tech Guide



CORDURA®

KEVLAR®



● **D30**
Protection

Provides impact protection for a range of sports applications. The high performing, comfortable, and flexible D30 kneepad provides the wearer with confidence, and no compromise on performance.

● **CORDURA**
Protection

Durability and exceptional strength-to-weight ratio. Resistant to tears, scuffs and abrasions. Designed for living, built to last.

● **KEVLAR**
Protection

Lightweight and extraordinarily strong, with five times the strength of steel on an equal-weight basis. Best known for its use in ballistic and stab-resistant body armour, Kevlar® has shown its heroism in helping to save the lives of thousands of people around the world.

FABRICS

Tech Guide



GCX

Fabric

For general recreation and watersports GCX fabric helps reduce wind-chill to improve your overall experience.

The durable PU coated GCX fabric ensures water cannot penetrate, remaining waterproof and windproof even during strenuous movement. GCX has been engineered to shed surface water quickly.

- LIGHTWEIGHT
- WINDPROOF
- WATER REPELLENT



GCX PU COATED

Fabric

For winter conditions GCX PU COATED fleece fabric keeps you snug and warm performing when wet or dry. Gaining the most from your watersports experience, allowing you to perform at your best for longer.

Thermally advanced GCX PU COATED polyurethane fabric. Engineered to keep you warmer for longer by combining a PU outer membrane with a inner fleece layer.

Waterproof -
3000 mm

Breathability -
3000 gr/m2/24h

All seams fully taped for long lasting waterproofness.

- WATERPROOF
- BREATHABLE
- THERMAL



GCX2

Fabric

For everyday to difficult conditions GCX2 fabric will keep you warm, dry and comfortable. Gaining the most from your watersports experience, allowing you to perform at your best for longer.

The hardwearing, breathable advanced GCX2 two-layer fabric, is specifically engineered to prevent water penetration, allowing perspiration moisture to evaporate.

Waterproof -
5000 mm

Breathability -
5000 gr/m2/24h

All seams fully taped for long lasting waterproofness

- WATERPROOF
- WINDPROOF
- BREATHABLE



GCX3

Fabric

For extreme wet, cold and windy conditions, GCX3 fabric will keep you warm, dry and safe. Gaining the optimum experience, allowing you to achieve personal goals, because the challenge never ends.

The advanced GCX3 three-layer fabric is specifically engineered for long-term performance. It offers waterproofness and breathability even during strenuous use. All seams fully taped for long lasting extreme waterproofness.

Waterproof -
20 000 mm

Breathability -
10 000 gr/m2/24h

All seams fully taped for long lasting extreme waterproofness.

- WATERPROOF
- WINDPROOF
- BREATHABLE

FABRICS

Tech Guide



GCX3S Fabric

For winter conditions GCX3S softshell fabric keeps you snug and warm performing when wet or dry. Gaining the most from your watersports experience, allowing you to perform at your best for longer.

The thermal advanced GCX 3S Ripstop softshell fabric is engineered to keep you warmer for longer by combining a durable DWR ripstop nylon outer with waterproof membrane and inner grid fleece thermal liner.

Waterproof-
10 000 mm
Breathability-
10 000 gr/m²/24h.

All seams fully taped for long lasting waterproofness.

- WATERPROOF
- BREATHABLE
- THERMAL



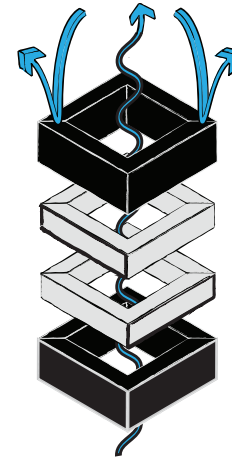
THERMAL

GCX3 THERMAL Fabric

For winter conditions GCX3 Thermal fabric keeps you snug and warm. Gaining the most from your watersports experience, allowing you to perform at your best for longer.

The advanced GCX 3 thermal sweater knit fabric is engineered to keep you warmer for longer by combining a windproof inner membrane with a comfortable fleece lining. Offering a windproof and breathable outer layer to combat the cold on and off the water.

- WINDPROOF
- BREATHABLE
- THERMAL



WINDPROOF WATERPROOF

Protects from wind and water penetration

OUTERLAYER

Water resistant, breathable high performance shell.

MIDLAYER

Waterproof, breathable coating

INNERLAYER

Wicking polyester tricot.

BREATHABLE

Allows condensation and perspiration to escape.

- WATERPROOF
- WINDPROOF
- BREATHABLE



GCX4 Fabric

For extreme wet, cold and windy conditions, GCX4 fabric will keep you warm, dry and safe. Allowing you to experience complete harmony with the conditions. The challenge never ends.

The highly advanced GCX4 four-layer fabric is specifically engineered to fit the demanding use over time.

Waterproof -
20 000 mm
Breathability-
10 000 g/m²/24h.

All seams fully taped for long lasting extreme waterproofness.

FABRICS

Tech Guide



GCX4 EVO

Fabric

For extreme wet, cold and windy conditions, GCX4 EVO mechanical stretch fabric will keep you warm, dry and safe. Gaining the optimum experience, allowing you to achieve personal goals, because the challenge never ends.

The highly advanced GCX4 four-layer 2/2 mechanical stretch fabric has been specifically engineered to fit the demanding use over time, whilst offering additional flexibility.

Waterproof-

20 000 mm

Breathability -

10 000 g/m/24h.

All seams fully taped for long lasting extreme waterproofness.

- WATERPROOF
- WINDPROOF
- BREATHABLE
- FLEXIBILITY

HYDR SHIELD

UV 50+ waterproof & windproof



HYDROSHIELD 3.0

Fabric

The ultimate 3-layer base layer defence system, giving you total comfort and protection even in the most extreme conditions. The water repellent 4-way stretch shell is combined with element protection core membrane.

The core membrane creates the ultimate thermal and moisture regulating system that allows the fabric to breathe, but prevents water/wind penetration however tough the environment. The inner face fabric helps wick moisture away from the skin as well as keeping you well protected from sun with 50+ UPF sun protection.

WATER REPELLENT FACE (OUTER)

4-way stretch hydrophobic yarn & UV protection

ELEMENT PROTECTION CORE (MEMBRANE)

waterproof/breathable membrane

WICKING INNER FACE

Temperature regulating moisture wicking inner

- WATERPROOF
- BREATHABLE
- UV PROTECTION



SURF

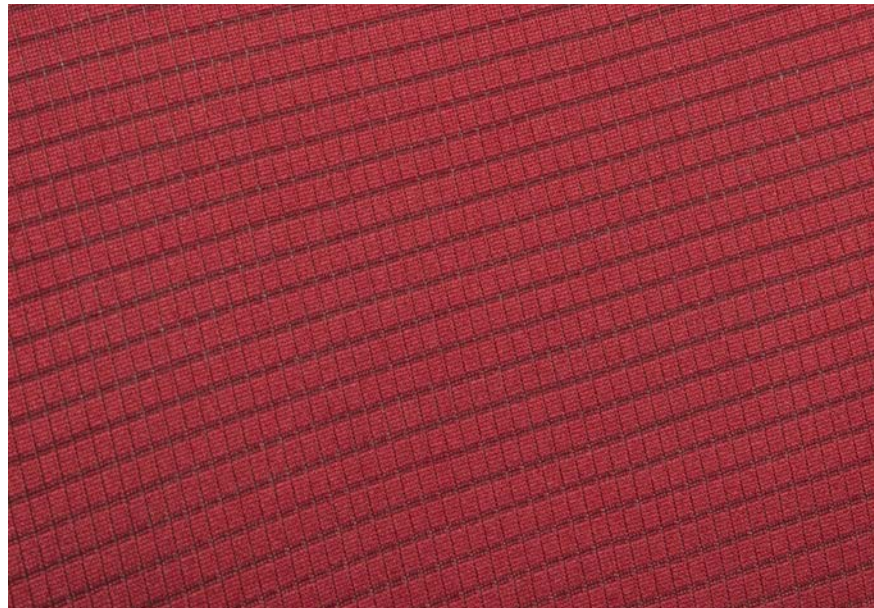
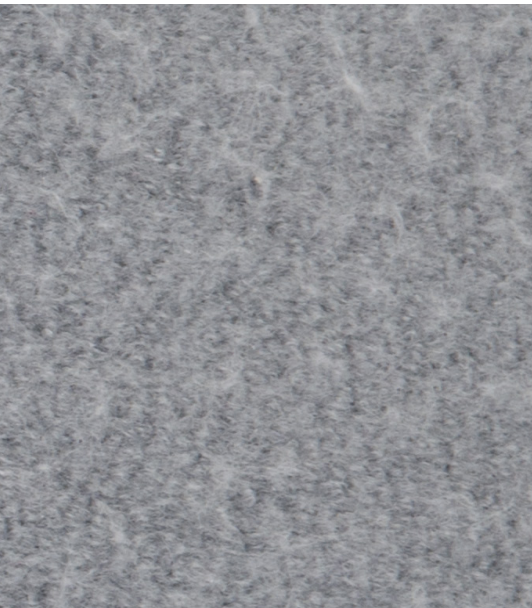
Gul Technical Apparel S/S 2016

VIPER / FLEXOR / RESPONSE FX /
RESPONSE / SURFLITE / SEASPRAY /
FLEXOR HOODY



VIPER

ULTIMATE / WARMTH / COMFORT



VIPER VR1228

Mens 3/2mm Neonseam B/S Wetsuit

VIPER VR1229

Ladies 3/2mm Neonseam B/S Wetsuit

ULTIMATE / WARMTH / COMFORT

GUL PERFORMANCE APPAREL SPRING / SUMMER 2016



NEW FEATURES

FEATURES:

- **BLINDSTITCHED:** Seam construction
- **NEONSEAM:** super thin 4mm liquid seam
- **RS-FLEX:** 150% textured superstretch
- **X-FLEX:** 150% super-stretch main body
- **BOLT DRY:** Thermal quick dry core
- **G-TAPE:** Inner waterproof X-Flex taping fuses seams together for additional reinforcement.
- **MESH:** back to prevent wind chill
- **POWERTEX4:** knees for flexibility & durability
- **AQUA- RING:** wrist seals
- **KEY POCKET:** lower calf pocket with key loop
- **QUADRATE:** Horizontal bib chest zip entry
- **PK MICRO ZIP:** waterproof low profile zip
- Non-petroleum based neoprene

COLOURS



● **Black**
code: VR1228-A9BKBK



● **Blue / Red**
code: VR1228-A9BLRE

SIZES: S / MS / MST / M / MT / ML / LS / L / LT / XL / XLT / XXL / XXLT



NEW FEATURES

FEATURES:

- **BLINDSTITCHED:** Seam construction
- **NEONSEAM:** super thin 4mm liquid seam
- **RS-FLEX:** 150% textured superstretch
- **X-FLEX:** 150% super-stretch main body
- **BOLT DRY:** Thermal quick dry core
- **G-TAPE:** Inner waterproof X-Flex taping fuses seams together for additional reinforcement.
- **MESH:** back to prevent wind chill
- **POWERTEX4:** knees for flexibility & durability
- **AQUA- RING:** wrist seals
- **KEY POCKET:** lower calf pocket with key loop
- **QUADRATE:** Horizontal bib chest zip entry
- **PK MICRO ZIP:** waterproof low profile zip
- Non-petroleum based neoprene

COLOURS



● **Black**
code: VR1229-A9BKBK



● **Mulberry / Grey**
code: VR1229-A9MUGY

SIZES: 6 / 8 / 10 / 10T / 12 / 12T / 12-14 / 14 / 16

VIPER VR1234

Mens 4/3mm Neonseam B/S Wetsuit

VIPER VR1235

Ladies 4/3mm Neonseam B/S Wetsuit

ULTIMATE / WARMTH / COMFORT



NEW FEATURES

FEATURES:

- **BLINDSTITCHED:** Seam construction
- **NEONSEAM:** super thin 4mm liquid seam
- **RS-FLEX:** 150% textured superstretch
- **X-FLEX:** 150% super-stretch main body
- **BOLT DRY:** Thermal quick dry core
- **G-TAPE:** Inner waterproof X-Flex taping fuses seams together for additional reinforcement.
- **MESH:** back to prevent wind chill
- **POWERTEX4:** knees for flexibility & durability
- **AQUA-RING:** wrist seals
- **KEY POCKET:** lower calf pocket with key loop
- **QUADRATE:** Horizontal bib chest zip entry
- **PK MICRO ZIP:** waterproof low profile zip
- Non-petroleum based neoprene



NEW FEATURES

FEATURES:

- **BLINDSTITCHED:** seam construction
- **NEONSEAM:** super thin 4mm liquid seam
- **RS-FLEX:** 150% textured superstretch
- **X-FLEX:** 150% super-stretch main body
- **BOLT DRY:** Thermal quick dry core
- **G-TAPE:** Inner waterproof X-Flex taping fuses seams together for additional reinforcement.
- **MESH:** back to prevent wind chill
- **POWERTEX4:** knees for flexibility & durability
- **AQUA-RING:** wrist seals
- **KEY POCKET:** lower calf pocket with key loop
- **QUADRATE:** Horizontal bib chest zip entry
- **PK MICRO ZIP:** waterproof low profile zip
- Non-petroleum based neoprene

COLOURS



Blue / Red
code: VR1234-A9BLRE



Black
code: VR1234-A9BKBK

SIZES: S / MS / MST / M / MT / ML / LS / L / LT / XL / XLT / XXL / XXLT

COLOURS



Mulberry / Grey
code: VR1235-A9MUGY



Black
code: VR1235-A9BKBK

SIZES: 6 / 8 / 10 / 10T / 12 / 12T / 12-14 / 14 / 16

FLEXOR 3

PERFORMANCE / FLEXIBILITY / LIQUIDSEAL



FLEXOR III FX1205

Mens 3/2mm Chest zip B/S Wetsuit

FLEXOR III FX1208

Mens 3/2mm B/S Wetsuit

PERFORMANCE / FLEXIBILITY / LIQUIDSEAL

GUL PERFORMANCE APPAREL SPRING / SUMMER 2016



NEW FEATURES

FEATURES:

- **BLINDSTITCHED:** Seam construction
- **LIQUIDSEAM:** 100% Water seal
- **RS-FLEX:** 150% Textured Superstretch overarms
- **X-FLEX:** 150% super-stretch main body
- **X-FLEX THERMAL:** ultimate insulation & warmth
- **G-TAPE:** Inner waterproof X-Flex taping fuses seams together for additional reinforcement
- **POWERTEX4:** knees for flexibility & durability
- **KEY POCKET:** lower calf pocket with key loop
- **QUADRATE:** Horizontal bib chest zip entry
- **PK MICRO ZIP:** waterproof low profile zip
- Non-petroleum based neoprene

COLOURS



Black

code: FX1205-A9BKBK



Jet / Pewter

code: FX1205-A9JEPW

SIZES: S / MS / MST / M / MT / ML / LS / L / LT / XL / XLT / XXL / XXLT



NEW

FEATURES:

- **BLINDSTITCHED:** Seam construction
- **LIQUIDSEAM:** 100% Water seal
- **RS-FLEX:** 150% Textured Superstretch overarms
- **X-FLEX:** 150% super-stretch main body
- **X-FLEX THERMAL:** ultimate insulation & warmth
- **G-TAPE:** Inner waterproof X-Flex taping fuses seams together for additional reinforcement
- **POWERTEX4:** knees for flexibility & durability
- **KEY POCKET:** lower calf pocket with key loop
- **UBS:** back zip system to eliminate flush
- **PK BLACKOUT:** waterproof zip
- Non-petroleum based neoprene

COLOURS



Jet / Pewter

code: FX1208-A9JEPW



Black

code: FX1208-A9BKBK

SIZES: S / MS / MST / M / MT / ML / LS / L / LT / XL / XLT / XXL / XXLT

RESPONSE

SURF / SUPERSTRETCH / VALUE



RESPONSE FX RE1240

Mens 3/2mm Chest zip Blindstitch Wetsuit

RESPONSE FX RE1262

Ladies 3/2mm Chest zip Blindstitch Wetsuit

SURF / SUPERSTRETCH / VALUE



NEW

FEATURES:

- **BLINDSTITCHED:** Seam construction
- **RS-FLEX:** 150% Textured Superstretch overarms
- **X-FLEX:** 150% super-stretch main body
- **X-FLEX THERMAL:** ultimate insulation & warmth
- **G-TAPE:** Inner waterproof X-Flex taping fuses seams together for additional reinforcement
- **POWERTEX4:** knees for flexibility & durability
- **KEY POCKET:** lower calf pocket with key loop
- **ABS:** aqua barrier chest entry
- **PRO NECK:** seam free neck seal
- **PK:** zip
- Non-petroleum based neoprene

COLOURS



● **Black**
code: RE1240-A9BKBK

SIZES: S / MS / MST / M / MT / ML / LS / L / LT / XL / XLT / XXL / XXLT



NEW

FEATURES:

- **BLINDSTITCHED:** Seam construction
- **RS-FLEX:** 150% Textured Superstretch overarms
- **X-FLEX:** 150% super-stretch main body
- **X-FLEX THERMAL:** ultimate insulation & warmth
- **G-TAPE:** Inner waterproof X-Flex taping fuses seams together for additional reinforcement
- **POWERTEX4:** knees for flexibility & durability
- **KEY POCKET:** lower calf pocket with key loop
- **ABS:** aqua barrier chest entry
- **PRO NECK:** seam free neck seal
- **PK:** zip
- Non-petroleum based neoprene

COLOURS



● **Navy / Turquoise**
code: RE1262-A9NATU

SIZES: 8 / 10 / 10T / 12 / 12T / 12-14 / 14 / 16

RESPONSE FX RE1263

Mens 3/2mm Blindstitch Wetsuit

RESPONSE FX RE1264

Ladies 3/2mm Blindstitch Wetsuit

SURF / SUPERSTRETCH / VALUE

GUL PERFORMANCE APPAREL SPRING / SUMMER 2016



NEW

FEATURES:

- **BLINDSTITCHED:** Seam construction
- **RS-FLEX:** 150% Textured Superstretch overarms
- **X-FLEX:** 150% super-stretch main body
- **X-FLEX THERMAL:** ultimate insulation & warmth
- **G-TAPE:** Inner waterproof X-Flex taping fuses seams together for additional reinforcement
- **POWERTEX4:** knees for flexibility & durability
- **KEY POCKET:** lower calf pocket with key loop
- **UBS:** back zip system to eliminate flush
- **PK:** short back zip
- Non-petroleum based neoprene

COLOURS



Black
code: RE1263-A6BKBK

SIZES: S / MS / MST / M / MT / ML / LS / L / LT / XL / XLT / XXL / XXLT



NEW

FEATURES:

- **BLINDSTITCHED:** Seam construction
- **I-FLEX:** 150% Two-tone Superstretch overarms
- **X-FLEX:** 150% super-stretch main body
- **X-FLEX THERMAL:** ultimate insulation & warmth
- **G-TAPE:** Inner waterproof X-Flex taping fuses seams together for additional reinforcement
- **POWERTEX4:** knees for flexibility & durability
- **KEY POCKET:** lower calf pocket with key loop
- **UBS:** back zip system to eliminate flush
- **PK:** short back zip
- Non-petroleum based neoprene

COLOURS



Navy / Marl
code: RE1264-A6NAMR

SIZES: 8 / 10 / 10T / 12 / 12T / 12-14 / 14 / 16

RESPONSE FX RE1255

Mens 5/3mm Blindstitch Wetsuit

RESPONSE FX RE1252

Junior 3/2mm Chest Zip Blindstitch Wetsuit

SURF / SUPERSTRETCH / VALUE

GUL PERFORMANCE APPAREL SPRING / SUMMER 2016



FEATURES:

- **BLINDSTITCHED:** Seam construction
- **X-FLEX:** 150% super-stretch main body
- **X-FLEX THERMAL:** ultimate insulation & warmth
- **G-TAPE:** Inner waterproof X-Flex taping fuses seams together for additional reinforcement
- **POWERTEX4:** knees for flexibility & durability
- **KEY POCKET:** lower calf pocket with key loop
- **UBS:** back zip system to eliminate flush
- **PK:** short back zip
- Non-petroleum based neoprene

COLOURS



● **Black**
code: RE1255-A8BKBK

SIZES: S / MS / MST / M / MT / ML / LS / L / LT / XL / XLT / XXL / XXLT



NEW

FEATURES:

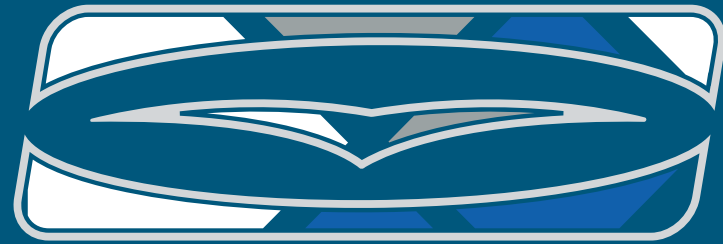
- **BLINDSTITCHED:** Seam construction
- **RS-FLEX:** 150% Textured Superstretch overarms
- **X-FLEX:** 150% super-stretch main body
- **X-FLEX THERMAL:** ultimate insulation & warmth
- **G-TAPE:** Inner waterproof X-Flex taping fuses seams together for additional reinforcement
- **POWERTEX4:** knees for flexibility & durability
- **KEY POCKET:** lower calf pocket with key loop
- **QUADRATE:** Horizontal bib chest zip entry
- **PK MICRO ZIP:** waterproof low profile zip
- Non-petroleum based neoprene

COLOURS



● **Black / Lime**
code: RE1252-A9BKLI

JUNIOR SIZES T2 / T3 / JXXXS / JXXS / JXS / JS / JM / JL / JXL



RESPONSE

TIMELESS / DURABLE / GREAT VALUE



RESPONSE RE1231

Mens 3/2mm Blindstitch Wetsuit

RESPONSE RE1232

Ladies 3/2mm Blindstitch Wetsuit

TIMELESS / DURABLE / GREAT VALUE

GUL PERFORMANCE APPAREL SPRING / SUMMER 2016



NEW FEATURES

FEATURES:

- **BLINDSTITCHED:** Seam construction
- **RS-FLEX:** 150% Textured Superstretch shoulders
- **X-FLEX:** 150% super-stretch overarms
- **THERMOSPAN:** core central heating system.
- **G-TAPE:** Inner waterproof X-Flex taping fuses seams together for additional reinforcement
- **MESH:** chest & back to prevent wind chill
- **POWERTEX4:** knees for flexibility & durability
- **TITANIUM 2:** reflects heat back in
- **S-LOCK:** easy entry back zip system
- **PK BLACKOUT:** waterproof zip
- Non-petroleum based neoprene



● **Graphite / Red**
code: RE1231-A9GPPE



● **Black / Blue**
code: RE1231-A9BKBL

COLOURS



● **Black**
code: RE1231-A9BKBK

SIZES: S / MS / MST / M / MT / ML / LS / L / LT / XL / XLT / XXL / XXLT



NEW FEATURES

FEATURES:

- **BLINDSTITCHED:** Seam construction
- **RS-FLEX:** 150% Textured Superstretch shoulders
- **X-FLEX:** 150% super-stretch overarms
- **THERMOSPAN:** core central heating system.
- **G-TAPE:** Inner waterproof X-Flex taping fuses seams together for additional reinforcement
- **MESH:** chest & back to prevent wind chill
- **POWERTEX4:** knees for flexibility & durability
- **TITANIUM 2:** reflects heat back in
- **S-LOCK:** easy entry back zip system
- **PK BLACKOUT:** waterproof zip
- Non-petroleum based neoprene



● **Black / Marl**
code: RE1232-A9BKMR



● **Navy / Marl**
code: RE1232-A9NAMR

COLOURS

SIZES: 8 / 10 / 10T / 12 / 12T / 12-14 / 14 / 16 / 18

RESPONSE RE1246

Mens 4/3mm Blindstitch Wetsuit

RESPONSE RE1248

Ladies 4/3mm Blindstitch Wetsuit

TIMELESS / DURABLE / GREAT VALUE

GUL PERFORMANCE APPAREL SPRING / SUMMER 2016



NEW FEATURES

FEATURES:

- **BLINDSTITCHED:** Seam construction
- **RS-FLEX:** 150% Textured Superstretch shoulders
- **X-FLEX:** 150% super-stretch overarms
- **THERMOSPAN:** core central heating system.
- **G-TAPE:** Inner waterproof X-Flex taping fuses seams together for additional reinforcement
- **MESH:** chest & back to prevent wind chill
- **POWERTEX4:** knees for flexibility & durability
- **TITANIUM 2:** reflects heat back in
- **S-LOCK:** easy entry back zip system
- **PK BLACKOUT:** waterproof zip
- Non-petroleum based neoprene

COLOURS



Black / Blue
code: RE1246-A9BKBL



Graphite / Red
code: RE1246-A9GPRE



Black
code: RE1246-A9BKBK

SIZES: S / MS / MST / M / MT / ML / LS / L / LT / XL / XLT / XXL / XXLT



NEW FEATURES

FEATURES:

- **BLINDSTITCHED:** Seam construction
- **RS-FLEX:** 150% Textured Superstretch shoulders
- **X-FLEX:** 150% super-stretch overarms
- **THERMOSPAN:** core central heating system.
- **G-TAPE:** Inner waterproof X-Flex taping fuses seams together for additional reinforcement
- **MESH:** chest & back to prevent wind chill
- **POWERTEX4:** knees for flexibility & durability
- **TITANIUM 2:** reflects heat back in
- **S-LOCK:** easy entry back zip system
- **PK BLACKOUT:** waterproof zip
- Non-petroleum based neoprene

COLOURS



Navy / Marl
code: RE1248-A9NAMR



Black / Marl
code: RE1248-A9BKMR

SIZES: 8 / 10 / 10T / 12 / 12T / 12-14 / 14 / 16 / 18

RESPONSE RE1242

Mens 5/3mm Chest Zip Blindstitch Wetsuit

RESPONSE RE1251

Junior 5/3mm Chest Zip Blindstitch Wetsuit

TIMELESS / DURABLE / GREAT VALUE

GUL PERFORMANCE APPAREL SPRING / SUMMER 2016



FEATURES:

- **BLINDSTITCHED:** Seam construction
- **X-FLEX:** 150% super-stretch
- **X-FLEX THERMAL:** ultimate insulation & warmth
- **SNAKESKIN:** DWR anti-abrasive coating
- **G-TAPE:** Inner waterproof X-Flex taping fuses seams together for additional reinforcement
- **MESH:** back to prevent wind chill
- **POWERTEX4:** knees for flexibility & durability
- **KEY POCKET:** lower calf pocket with key loop
- **ABS:** aqua barrier chest entry
- **PRO NECK:** seam free neck seal
- **PK:** zip
- Non-petroleum based neoprene

COLOURS



● **Black / Cardinal**
code: RE1242-A6BKCA

SIZES: S / MS / MST / M / MT / ML / LS / L / LT / XL / XLT / XXL / XXLT



FEATURES:

- **BLINDSTITCHED:** Seam construction
- **X-FLEX:** 150% super-stretch main body
- **X-FLEX -THERMAL:** ultimate insulation & warmth
- **SNAKESKIN:** DWR anti-abrasive coating
- **G-TAPE:** Inner waterproof X-Flex taping fuses seams together for additional reinforcement
- **POWERTEX4:** knees for flexibility & durability
- **QUADRATE:** Horizontal bib chest zip entry
- **PRO NECK:** seam free neck seal
- **PK BLACKOUT:** water lock zip
- Non-petroleum based neoprene

COLOURS



● **Gunmetal / Lime**
code: RE1251-A6GULI

JUNIOR SIZES T2 / T3 / JXXXS / JXXS / JXS / JS / JM / JL / JXL

RESPONSE RE1213

Mens 5/3mm Blindstitch Wetsuit

RESPONSE RE1229

Ladies 5/3mm Blindstitch Wetsuit

TIMELESS / DURABLE / GREAT VALUE

GUL PERFORMANCE APPAREL SPRING / SUMMER 2016



FEATURES:

- **BLINDSTITCHED:** Seam construction
- **X-FLEX:** 150% super-stretch overarms
- **D-FLEX:** Durable lower body panels
- **THERMOSPAN:** core central heating system.
- **G-TAPE:** Inner waterproof X-Flex taping fuses seams together for additional reinforcement
- **MESH:** chest & back to prevent wind chill
- **POWERTEX4:** knees for flexibility & durability
- **TITANIUM 2:** reflects heat back in
- **KEY POCKET:** lower calf pocket with key loop
- **S-LOCK:** easy entry back zip system
- **PK BLACKOUT:** waterproof zip
- Non-petroleum based neoprene

COLOURS



Black / Cardinal
code: RE1213-A6BKCA

SIZES: S / MS / MST / M / MT / ML / LS / L / LT / XL / XLT / XXL / XXLT



FEATURES:

- **BLINDSTITCHED:** Seam construction
- **X-FLEX:** 150% super-stretch overarms
- **D-FLEX:** Durable lower body panels
- **THERMOSPAN:** core central heating system.
- **G-TAPE:** Inner waterproof X-Flex taping fuses seams together for additional reinforcement
- **MESH:** chest & back to prevent wind chill
- **POWERTEX4:** knees for flexibility & durability
- **TITANIUM 2:** reflects heat back in
- **KEY POCKET:** lower calf pocket with key loop
- **S-LOCK:** easy entry back zip system
- **PK BLACKOUT:** waterproof zip
- Non-petroleum based neoprene

COLOURS



Black / Mint
code: RE1229-A6BKMI

SIZES: 8 / 10 / 10T / 12 / 12T / 12-14 / 14 / 16 / 18

RESPONSE RE1249

Junior 4/3mm Blindstitch Wetsuit

RESPONSE RE1218

Junior 5/3mm Blindstitch Wetsuit

TIMELESS / DURABLE / GREAT VALUE

GUL PERFORMANCE APPAREL SPRING / SUMMER 2016



NEW FEATURES

FEATURES:

- **BLINDSTITCHED:** Seam construction
- **RS-FLEX:** 150% Textured Superstretch shoulders
- **X-FLEX:** 150% super-stretch overarms
- **THERMOSPAN:** core central heating system.
- **G-TAPE:** Inner waterproof X-Flex taping fuses seams together for additional reinforcement
- **MESH:** chest & back to prevent wind chill
- **POWERTEX4:** knees for flexibility & durability
- **TITANIUM 2:** reflects heat back in
- **S-LOCK:** easy entry back zip system
- **PK BLACKOUT:** waterproof zip
- Non-petroleum based neoprene

COLOURS



● **Black / Blue**
code: RE1249-A9BKBL



● **Graphite / Red**
code: RE1249-A9GPRE



● **Black**
code: RE1249-A9BKBK

JUNIOR SIZES

T2 / T3 / JXXXS / JXXS / JXS / JS / JM / JL / JXL



FEATURES:

- **X-FLEX:** 150% super-stretch
- **D-FLEX:** durable lower body panels
- **BLINDSTITCHED:** Seam construction
- **THERMOSPAN:** core central heating system
- **G-TAPE:** Inner waterproof X-Flex taping fuses seams together for additional reinforcement
- **MESH:** chest & back to prevent wind chill
- **POWERTEX4:** knees for flexibility & durability
- **PRO NECK:** seam free neck seal
- **S-LOCK:** easy entry back zip system
- **PK BLACKOUT:** water lock zip
- Non-petroleum based neoprene

COLOURS



● **Gunmetal / Lime**
code: RE1218-A6GULI

JUNIOR SIZES

T2 / T3 / JXXXS / JXXS / JXS / JS / JM / JL / JXL

RESPONSE RE1321

Mens 3/2mm Flatlock Wetsuit

RESPONSE RE1319

Ladies 3/2mm Flatlock Wetsuit

TIMELESS / DURABLE / GREAT VALUE

GUL PERFORMANCE APPAREL SPRING / SUMMER 2016



NEW

FEATURES:

- **FLATLOCK:** seam construction
- **X-FLEX:** 150% super-stretch
- **D-FLEX:** durable lower body panels
- **TECH-NECK:** single layer seal
- Mesh chest & back
- **POWERTEX4:** knees for flexibility & durability
- **PK:** zipper
- Non-petroleum based neoprene

COLOURS



● **Black**
code: RE1321-A9BKBK



● **Graphite / Red**
code: RE1321-A9GPRE



● **Black / Grey**
code: RE1321-A9BKGY

SIZES: S / MS / MST / M / MT / ML / LS / L / LT / XL / XLT / XXL / XXLT



NEW

FEATURES:

- **FLATLOCK:** seam construction
- **X-FLEX:** 150% super-stretch
- **D-FLEX:** durable lower body panels
- **TECH-NECK:** single layer seal
- Mesh chest & back
- **POWERTEX4:** knees for flexibility & durability
- **PK:** zipper
- Non-petroleum based neoprene

COLOURS



● **Black**
code: RE1319-A9BKBK



● **Navy / Turquoise**
code: RE1319-A9NATU



● **Mulberry / Grey**
code: RE13219-A9MUGY

SIZES: 8 / 10 / 10T / 12 / 12T / 12-14 / 14 / 16 / 18

RESPONSE RE1322

Junior 3/2mm Flatlock Wetsuit

RESPONSE RE1323

Junior 3/2mm Flatlock Wetsuit

TIMELESS / DURABLE / GREAT VALUE

GUL PERFORMANCE APPAREL SPRING / SUMMER 2016



NEW

FEATURES:

- **FLATLOCK:** seam construction
- **X-FLEX:** 150% super-stretch
- **D-FLEX:** durable lower body panels
- **TECH-NECK:** single layer seal
- Mesh chest & back
- **POWERTEX4:** knees for flexibility & durability
- **PK:** zipper
- Non-petroleum based neoprene



Graphite / Red
code: RE1322-A9GPRE



Black / Blue
code: RE1322-A9BKBL

COLOURS



Black
code: RE1322-A9BKBK

JUNIOR SIZES

T2 / T3 / JXXXS / JXXS / JXS / JS / JM / JL / JXL



NEW

FEATURES:

- **FLATLOCK:** seam construction
- **X-FLEX:** 150% super-stretch
- **D-FLEX:** durable lower body panels
- **TECH-NECK:** single layer seal
- Mesh chest & back
- **POWERTEX4:** knees for flexibility & durability
- **PK:** zipper
- Non-petroleum based neoprene



Black/Turquoise
code: RE1323-A9BKBU

COLOURS

JUNIOR SIZES

T2 / T3 / JXXXS / JXXS / JXS / JS / JM / JL / JXL

RESPONSE RE3319

Mens 3/2mm Flatlock Shorti

RESPONSE RE3318

Ladies 3/2mm Flatlock Shorti

TIMELESS / DURABLE / GREAT VALUE

GUL PERFORMANCE APPAREL SPRING / SUMMER 2016



NEW

FEATURES:

- FLATLOCK: seam construction
- X-FLEX: 150% super-stretch
- D-FLEX: durable lower body panels
- TECH-NECK: single layer seal
- Mesh chest & back
- PK: zipper
- Non-petroleum based neoprene

COLOURS



Black / Blue
code: RE3319-A9BKBL



Graphite / Red
code: RE3319-A9GPRE



Black
code: RE3319-A9BKBK

SIZES: S / MS / MST / M / MT / ML / LS / L / LT / XL / XLT / XXL / XXLT



NEW

FEATURES:

- FLATLOCK: seam construction
- X-FLEX: 150% super-stretch
- D-FLEX: durable lower body panels
- TECH-NECK: single layer seal
- Mesh chest & back
- PK: zipper
- Non-petroleum based neoprene

COLOURS



Navy / Turquoise
code: RE3318-A9NATU



Black
code: RE3318-A9BKBK



Mulberry / Grey
code: RE3318-A9MUGY

SIZES: 8 / 10 / 10T / 12 / 12T / 12-14 / 14 / 16 / 18 / 20 / 22

RESPONSE RE3322

Junior 3/2mm Flatlock Shorti

RESPONSE RE3321

Junior 3/2mm Flatlock Shorti

TIMELESS / DURABLE / GREAT VALUE



NEW

FEATURES:

- **FLATLOCK:** seam construction
- **X-FLEX:** 150% super-stretch
- **D-FLEX:** durable lower body panels
- **TECH-NECK:** single layer seal
- Mesh chest & back
- **PK:** zipper
- Non-petroleum based neoprene



NEW

FEATURES:

- **FLATLOCK:** seam construction
- **X-FLEX:** 150% super-stretch
- **D-FLEX:** durable lower body panels
- **TECH-NECK:** single layer seal
- Mesh chest & back
- **PK:** zipper
- Non-petroleum based neoprene

GUL PERFORMANCE APPAREL SPRING / SUMMER 2016

COLOURS



Black / Blue
code: RE3322-A9BKBL



Graphite / Red
code: RE3322-A9GPRE



Black
code: RE3322-A9BKBK

COLOURS



Black/Turquoise
code: RE3321-A9BK TU

JUNIOR SIZES

T2 / T3 / JXXXS / JXXS / JXS / JS / JM / JL / JXL

JUNIOR SIZES

T2 / T3 / JXXXS / JXXS / JXS / JS / JM / JL / JXL

RESPONSE RE5304

Mens 3/2mm Flatlock Shortjohn

RESPONSE RE5306

Ladies 3/2mm Flatlock Shortjane

TIMELESS / DURABLE / GREAT VALUE



NEW FEATURES

FEATURES:

- **FLATLOCK:** seam construction
- **X-FLEX:** 150% super-stretch
- **D-FLEX:** durable lower body panels
- **THERMOSPAN:** chest & back
- Velcro shoulder entry system
- Non-petroleum based neoprene



NEW FEATURES

FEATURES:

- **FLATLOCK:** seam construction
- **X-FLEX:** 150% super-stretch
- **D-FLEX:** durable lower body panels
- **THERMOSPAN:** chest & back
- **PK:** zipper
- Non-petroleum based neoprene

COLOURS



Black
code: RE5304-A9BKBK

COLOURS



Black
code: RE5306-A9BKBK

SIZES: S / MS / MST / M / MT / ML / LS / L / LT / XL / XLT / XXL / XXLT

SIZES: 8 / 10 / 10T / 12 / 12T / 12-14 / 14 / 16 / 18

RESPONSE RE4313

Mens 3/2mm Flatlock Longjohn

RESPONSE RE4314

Ladies 3/2mm Flatlock Longjane

TIMELESS / DURABLE / GREAT VALUE



NEW FEATURES

FEATURES:

- **FLATLOCK:** seam construction
- **X-FLEX:** 150% super-stretch
- **D-FLEX:** durable lower body panels
- **THERMOSPAN:** chest & back
- **PK:** zipper
- Non-petroleum based neoprene



NEW FEATURES

FEATURES:

- **FLATLOCK:** seam construction
- **X-FLEX:** 150% super-stretch
- **D-FLEX:** durable lower body panels
- **THERMOSPAN:** chest & back
- **PK:** zipper
- Non-petroleum based neoprene

COLOURS



Black
code: RE4313-A9BKBK

COLOURS



Black
code: RE4314-A9BKBK

SIZES: S / MS / MST / M / MT / ML / LS / L / LT / XL / XLT / XXL / XXLT

SIZES: 8 / 10 / 10T / 12 / 12T / 12-14 / 14 / 16 / 18



SURFLITE

NEW FOR SPRING SUMMER 2016



SURFLITE SL5301

Ladies 3mm Flatlock Shortjane

SURFLITE SL3301

Ladies 2mm Flatlock Springsuit

BOLD / FEMININE / RETRO

GUL PERFORMANCE APPAREL SPRING / SUMMER 2016



NEW

FEATURES:

- **FLATLOCK:** seam construction
- **X-FLEX:** 150% super-stretch
- **GLIDE SKIN:** Leg and arm openings
- Zip free entry system
- Non-petroleum based neoprene
- Reversible



REVERSIBLE
 Lime / Bright Cyan
 code: SL5301-A7LICY



REVERSIBLE
 Ink Blue / Bone
 code: SL5301-A7IBBO

COLOURS



REVERSIBLE
 Bone / Acid Blue
 code: SL5301-A7BOAB

SIZES: 6 / 8 / 10 / 10T / 12 / 12T / 12-14 / 14 / 16



NEW

FEATURES:

- **FLATLOCK:** seam construction
- **X-FLEX:** 150% super-stretch
- **PK:** zipper
- **KEY POCKET:** concealed pocket with key loop
- Non-petroleum based neoprene



Bright Cyan / Fog Blue
 code: SL3301-A7CYFB

COLOURS



Ink Blue / Fog Blue
 code: SL3301-A7IBFB



Acid Blue / Pink
 code: SL3301-A9ABPI

SIZES: 6 / 8 / 10 / 10T / 12 / 12T / 12-14 / 14 / 16



TODDLER / ULTRA STRETCH / WARMTH

SEASPRAY SS3301

NEW

Toddler 3/2mm Flatlock Shorti



FEATURES:

- **FLATLOCK:** seam construction
- **X-FLEX:** 150% super-stretch
- **PK:** Front zipper for ease of entry
- Non-petroleum based neoprene

COLOURS



Turquoise / Pink
code: SS3301-A9TUPI



Red / Grey
code: SS3301-A9REGY

TODDLER SIZES

T0 / T1 / T2 / T3

FLEXOR HH FX6401

Neoprene Hoody



FEATURES:

- Waterproof /Windproof neoprene
- **BOLTDRY GRID:** thermal lined
- Reinforced harness hook
- **FLOW:** hood, underarm gusset & forearm drainage
- Large handwarmer pouch pocket
- **X-FLEX:** hem & wrist opening
- Oversized fit



COLOURS



Black
code: FX6401-A8BKBK

SIZES: S / M / L / XL

RESPONSE RE6304

3MM FLATLOCK WETSUIT JACKET



NEW

FEATURES:

- **FLATLOCK:** seam construction
- **X-FLEX:** 150% super-stretch
- **THERMOSPAN:** chest & lower kidney panels
- **PK:** zipper
- Non-petroleum based neoprene



COLOURS



● **Black**
code: RE6304-A9BKBK

SIZES: S / MS / M / ML / LS / L / XL / XXL

RESPONSE RE6305

LADIES 3MM FLATLOCK WETSUIT JACKET



NEW

FEATURES:

- **FLATLOCK:** seam construction
- **X-FLEX:** 150% super-stretch
- **THERMOSPAN:** chest & lower kidney panels
- **PK:** zipper
- Non-petroleum based neoprene



COLOURS



● **Black**
code: RE6305-A9BKBK

SIZES: 8 / 10 / 12 / 14 / 16 / 18



SAIL

Gul Technical Apparel S/S 2016

CODE ZERO WETSUIT / CODE ZERO LONGJOHN & LONGJANE /
CODE ZERO HYBRID / CODE ZERO SOFTSHELL

CODE ZERO CZ1201

Mens 4/3mm Blindstitch Streamer

CODE ZERO CZ1202

Ladies 4/3mm Blindstitch Wetsuit

THERMAL / VERSATILE / PROTECTION

GUL PERFORMANCE APPAREL SPRING / SUMMER 2016



NEW

FEATURES:

- **BLINDSTITCHED:** Seam construction
- **I-FLEX:** 150% Two-tone Superstretch
- **X-FLEX -THERMAL:** ultimate insulation & warmth
- **FLEXTEX:** seat panel increased durability
- **TITANIUM 2:** reflects heat back in
- **G-TAPE:** Inner waterproof X-Flex taping fuses seams together for additional reinforcement
- **P-Eazy:** Fly relief system
- **POWERTEX4:** knees for flexibility & durability
- **S-SHIELD:** Internal knee protective pad
- **FLOW:** leg drainage system
- **UBS:** back zip system to eliminate flush
- Non-petroleum based neoprene
- Windward CZ Pro power pad compatible (GM0372)

COLOURS



● **Grey-marl**
code: CZ1201-A9GYMR



SIZES: S / MS / MST / M / MT / ML / LS / L / LT / XL / XLT / XXL / XXLT



NEW

FEATURES:

- **BLINDSTITCHED:** Seam construction
- **I-FLEX:** 150% Two-tone Superstretch
- **X-FLEX -THERMAL:** ultimate insulation & warmth
- **FLEXTEX:** seat panel increased durability
- **TITANIUM 2:** reflects heat back in
- **G-TAPE:** Inner waterproof X-Flex taping fuses seams together for additional reinforcement
- **POWERTEX4:** knees for flexibility & durability
- **S-SHIELD:** Internal knee protective pad
- **FLOW:** leg drainage system
- **UBS:** back zip system to eliminate flush
- Non-petroleum based neoprene
- Windward CZ Pro power pad compatible (GM0372)

COLOURS



● **Black-marl**
code: CZ1202-A9BKMR



SIZES: 8 / 10 / 10T / 12 / 12T / 12-14 / 14 / 16 / 18

CODE ZERO CZ2301

Mens 3/2mm Front Zip Flatlock Short Arm

CODE ZERO CZ3301

Mens 3/2mm Front Zip Flatlock Shorti

THERMAL / VERSATILE / PROTECTION

GUL PERFORMANCE APPAREL SPRING / SUMMER 2016



NEW

FEATURES:

- **FLATLOCK:** seam construction
- **I-FLEX:** 150% Two-tone Superstretch
- **FLEXTEX:** seat panel increased durability
- **TITANIUM 2:** reflects heat back in
- **AIRPRENE:** back panel
- **POWERTEX4:** knees for flexibility & durability
- **DRAIN HOLES:** ankle drainage holes
- **GLIDE SKIN:** Leg and arm openings
- **PK:** two way Front zip
- Non-petroleum based neoprene
- Windward CZ Pro power pad compatible (GM0372)

COLOURS



● **Grey-marl**
code: CZ2301-A9GYMR



SIZES: S / MS / MST / M / MT / ML / LS / L / LT / XL / XLT / XXL / XXLT



NEW

FEATURES:

- **FLATLOCK:** seam construction
- **I-FLEX:** 150% Two-tone Superstretch
- **FLEXTEX:** seat panel increased durability
- **TITANIUM 2:** reflects heat back in
- **AIRPRENE:** back panel
- **GLIDE SKIN:** Leg and arm openings
- **PK:** two way Front zip
- Non-petroleum based neoprene
- Windward CZ Pro power pad compatible (GM0372)

COLOURS



● **Grey-marl**
code: CZ3301-A9GYMR



SIZES: S / MS / MST / M / MT / ML / LS / L / LT / XL / XLT / XXL / XXLT

CODE ZERO CZ4207

Mens 3mm Blindstitched Long John

CODE ZERO CZ4208

Ladies 3mm Blindstitched Long Jane

THERMAL / VERSATILE / PROTECTION

GUL PERFORMANCE APPAREL SPRING / SUMMER 2016



FEATURES:

- **BLINDSTITCHED:** Seam construction
- **I-FLEX:** 150% Two-tone Superstretch
- **X-FLEX -THERMAL:** ultimate insulation & warmth
- **FLEXTEX:** seat panel increased durability
- **TITANIUM 2:** reflects heat back in
- **G-TAPE:** Inner waterproof X-Flex taping fuses seams together for additional reinforcement
- **P-Eazy:** Fly relief system
- **POWERTEX4:** knees for flexibility & durability
- **S-SHIELD:** Internal knee protective pad
- **FLOW:** leg drainage system
- Non-petroleum based neoprene
- Windward CZ Pro power pad compatible (GM0372)

COLOURS



● **Grey-marl**
code: CZ4207-A9GYMR



SIZES: S / MS / MST / M / MT / ML / LS / L / LT / XL / XLT / XXL / XXLT



FEATURES:

- **BLINDSTITCHED:** Seam construction
- **I-FLEX:** 150% Two-tone Superstretch
- **X-FLEX -THERMAL:** ultimate insulation & warmth
- **FLEXTEX:** seat panel increased durability
- **TITANIUM 2:** reflects heat back in
- **G-TAPE:** Inner waterproof X-Flex taping fuses seams together for additional reinforcement
- **POWERTEX4:** knees for flexibility & durability
- **S-SHIELD:** Internal knee protective pad
- **FLOW:** leg drainage system
- Non-petroleum based neoprene
- Windward CZ Pro power pad compatible (GM0372)

COLOURS



● **Black-marl**
code: CZ4208-A9BKMR



SIZES: 8 / 10 / 10T / 12 / 12T / 12-14 / 14 / 16 / 18

CODE ZERO CZ4301

Mens 3mm Flatlock Long John

CODE ZERO CZ8303

Mens 3mm Flatlock Trousers

THERMAL / VERSATILE / PROTECTION

GUL PERFORMANCE APPAREL SPRING / SUMMER 2016



NEW

FEATURES:

- **FLATLOCK:** seam construction
- **I-FLEX:** 150% Two-tone Superstretch
- **FLEXTEX:** seat panel increased durability
- **TITANIUM 2:** reflects heat back in
- **AIRPRENE:** back panel
- **P-Eazy:** Fly relief system
- **POWERTEX4:** knees for flexibility & durability
- **DRAIN HOLES:** ankle drainage holes
- **GLIDE SKIN:** Leg and arm openings
- Velcro shoulder entry system
- Non-petroleum based neoprene
- Windward CZ Pro power pad compatible (GM0372)

COLOURS



● **Gray-marl**
code: CZ4301-A9GYMR



SIZES: S / MS / MST / M / MT / ML / LS / L / LT / XL / XLT / XXL / XXLT



NEW

FEATURES:

- **FLATLOCK:** seam construction
- **I-FLEX:** 150% Two-tone Superstretch
- **FLEXTEX:** seat panel increased durability
- **TITANIUM 2:** reflects heat back in
- **AIRPRENE:** Lumbar pannel
- **POWERTEX4:** knees for flexibility & durability
- **DRAIN HOLES:** ankle drainage holes
- **GLIDE SKIN:** waist seal
- Non-petroleum based neoprene
- Windward CZ Pro power pad compatible (GM0372)

COLOURS



● **Grey-marl**
code: CZ8303-A9GYMR



SIZES: S / MS / MST / M / MT / ML / LS / L / LT / XL / XLT / XXL / XXLT

CODE ZERO GM0377

Mens 4mm Hybrid

COMFORT / FLEXIBILITY / DRY



FEATURES:

- **BLINDSTITCHED:** Seam construction
- **LIQUIDSEAM:** 100% Water seal
- **GCX4 EVO** Breathable, waterproof, 2/2 mechanical stretch technology on arms
- **X-FLEX -THERMAL:** ultimate insulation & warmth
- **DURATEX:** seat panel increased durability
- **G-TAPE:** Inner waterproof X-Flex taping fuses seams together for additional reinforcement
- **GLIDE SKIN:** neck and cuff seal
- **POWERTEX4:** knees for flexibility & durability
- **YKK AQUASEAL** zip system
- Water resistant zip sleeve pocket
- Non-petroleum based neoprene
- Windward CZ Pro power pad compatible (GM0372)

COLOURS



Black
code: GM0377-A8BKBK



SIZES: S / MS / MST / M / MT / ML / L / XL / XXL

CODE ZERO K3MJ32

Softshell Jacket



FEATURES:

- **GCX3S:** Waterproof, Windproof & breathable softshell fabric
- Bonded zipped chest pocket
- Hand warmer pockets
- Internal chest pocket
- Fitted Cuff
- Adjustable hem

COLOURS



Blue
code: K3MJ32-A9BLBL



Raven
code: K3MJ32-A9RARA

SIZES: XS / S / M / L / XL / XXL

MARINE

Gul Technical Apparel S/S 2016

DAY RACE WEAR / VIGO COASTAL RANGE / SPRAY TOPS /
HIKERS / TRAPEZE HARNESS / KNEE PADS



CODE ZERO GM0200

Day Race Jacket



FEATURES:

- GCX4 Breathable, waterproof, hard wearing 4 layer fabric
- 100% Waterproof heat taped seams
- CORDURA®: reinforced seat panel
- YKK AQUAGUARD: 2 way W/R front zip
- Stow-away, 3-way adjustable hood
- Internal PU adjustable cuffs
- Adjustable outer cuffs
- Easy-grab elasticated hem adjuster

COLOURS



- Black
code:GM0200-A7BKBK

SIZES: XS / S / M / L / XL / XXL

CODE ZERO GM0202

Day Race Salopettes



FEATURES:

- GCX4 Breathable, waterproof, hard wearing 4 layer fabric
- 100% Waterproof heat taped seams
- CORDURA®: reinforced seat/knees
- Neoprene adjustable shoulders
- YKK AQUAGUARD: 2 way W/R front zip
- Front zip fly gusset
- Fully adjustable ankle closure
- Elasticated adjustable waist

COLOURS



- Black
code:GM0202-A7BKBK

SIZES: XS / S / M / L / XL / XXL

VIGO GM0321

Mens Coastal Jacket

VIGO GM0328

Mens Coastal Trousers

GUL PERFORMANCE APPAREL SPRING / SUMMER 2016



FEATURES:

- GCX2 EVO fabric - performance weight, breathable, waterproof, windproof
- 100% Waterproof heat taped seams
- Brushed mesh lined for lightweight performance
- Stow-away, 2-way adjustable hood
- Quick-Dry fleece lined collar
- 2-way zip with chin guard and storm flap
- Internal PU adjustable cuffs
- Adjustable outer cuffs
- Quick-Dry hand warmer pockets
- Easy-grab elasticated hem adjuster
- Life jacket loops



COLOURS



Red / Navy
code: GM0321-A7RENA

SIZES: S / M / L / XL / XXL



FEATURES:

- GCX2 EVO fabric - performance weight, breathable, waterproof, windproof
- 100% Waterproof heat taped seams
- **CORDURA®**: reinforcement at seat, knees and ankle cuffs
- Taffeta lined for ease of donning
- Fully adjustable wide shoulder braces
- Braces cross to stay on shoulder
- 2-way front zip with storm flap
- Internal storm gusset for added protection against the elements
- Quick-Dry hand warmer pockets
- Secure thigh pocket with drainage
- Mesh lined ankle
- Fully adjustable ankle closure

COLOURS



Red / Navy
code: GM0328-A7RENA

SIZES: S / M / L / XL / XXL

CODE ZERO ST0028

Pro Tri-Laminate Spray Top



FEATURES:

- GCX4 EVO Breathable, waterproof, 2/2 mechanical stretch technology
- 100% Waterproof heat taped seams
- Adjustable PU collar and wrist seals
- Front fastening neoprene waist
- Zipped pocket
- Internal zip gusset

COLOURS



● **Black**
code: ST0028-A7BKBK

SIZES: XS / S / M / L / XL / XXL

CODE ZERO ST0031

Junior Taped Spray Top



NEW

FEATURES:

- GCX2: Waterproof & Breathable
- 100% Waterproof heat taped seams
- Adjustable neoprene collar
- Adjustable PU wrist seals
- Neck gusset for venting
- Secure chest pocket with drain holes
- Adjustable neoprene waist

COLOURS



● **Black**
code: ST0031-A9BKBK

JUNIOR SIZES

JS / JM / JL

BALLISTIC ST0023

Adult & Junior Tri-Laminate Taped Spray Top



FEATURES:

- GCX3: Waterproof & Breathable
- 100% Waterproof heat taped seams
- Zipped neck with gusset
- Adjustable PU collar and wrist seals
- Secure pocket with drain holes
- Front fastening neoprene waist

COLOURS



Red
code: ST0023-A7RERE



Grey
code: ST0023-A7GYGY

SIZES: S / M / L / XL / XXL

JUNIOR SIZES JS / JM / JL

BALLISTIC ST0024

Ladies Tri-Laminate Taped Spray Top



FEATURES:

- GCX3: Waterproof & Breathable
- 100% Waterproof heat taped seams
- Zipped neck with gusset
- Adjustable PU collar and wrist seals
- Secure pocket with drain holes
- Front fastening neoprene waist

COLOURS



Italian Plum
code: ST0024-A7PLPL



Black
code: ST0024-A7BKBK

SIZES: 8 / 10 / 12 / 14 / 16

GAMMA ST0021

Adult & Junior Taped Spray Top



NEW COLOURS

FEATURES:

- GCX2: Waterproof & Breathable
- 100% Waterproof heat taped seams
- Adjustable neoprene collar
- Adjustable PU wrist seals
- Neck gusset for venting
- Secure chest pocket with drain holes
- Adjustable neoprene waist (Adult only)
- Elasticated waist (Junior only)

COLOURS



Blue

code: ST0021-A9BLBL



Black

code: ST0021-A9BKBK



Red

code: ST0021-A9RERE

SIZES: S / M / L / XL / XXL

JUNIOR SIZES

JS / JM / JL

SHORE ST0030

Adult & Junior Spray Top



FEATURES:

- GCX: Waterproof, wind-proof fabric
- Double stitched seams
- Adjustable neoprene Glideskin collar
- Aquastop Neck gusset for ventilation
- Adjustable PU wrist seals for comfort
- Elasticated waist

COLOURS



Grey / Red

code: ST0030-A6GYRE



Red / Grey

code: ST0030-A6REGY

SIZES: S / M / L / XL / XXL

JUNIOR SIZES

JS / JM / JL

RACELITE ST0027

Adult & Junior Thermal Spray Top

RACELITE PRO ST0029

Adult & Junior Thermal Spray Top



FEATURES:

- GCX PU: PU coated microfleece
- Waterproof/ Breathable
- Waterproof heat taped seams
- Four way stretch
- Shockcord adjustable neck & waist
- Adjustable PU wrist seals



FEATURES:

- GCX PU: PU coated microfleece
- Waterproof/ Breathable
- Waterproof heat taped seams
- Four way stretch
- Shockcord adjustable neck
- Adjustable PU wrist seals
- Front fastening neoprene waist
- Hand warmer pockets

COLOURS



Black

code: ST0027-A7BKBK

COLOURS



Black

code: ST0029-A7BKBK

SIZES: S / M / L / XL / XXL

JUNIOR SIZES

JS / JM / JL

SIZES: S / M / L / XL / XXL

JUNIOR SIZES

JS / JM / JL

BALLISTIC GM0365

Tri-Laminate Hi-Fit Trousers



FEATURES:

- GCX3: Waterproof & Breathable
- 100% Waterproof heat taped seams
- Elastic adjustable plush shoulder braces
- Secure thigh pocket with drain holes
- Abrasion resistant seat & knees
- Adjustable ankle closure
- Articulated fit for freedom of movement

COLOURS



● Grey
code: GM0365-A7GYGY

SIZES: XS / S / M / L / XL / XXL

WINDWARD GM0372

Windward Hiking Pro Pads



FEATURES:

- Suitable for all Gul hiking enabled Wetsuits
- Lightweight & Durable
- DURATEX POWERGRIP: high power grip
- Velcro connection points
- Fibreglass battens
- Webbing protected battens
- Super soft plush lining
- Seam lock Lycra binding for softer rounder edges
- Nylon mesh storage bag
- Available in:
 - S- 22CM X 20CM
 - M- 25CM X 20CM
 - L- 28CM X 24CM

COLOURS



● Grey / Red
code: GM0372-A5GYRE

SIZES: S / M / L

CODE ZERO GM0360

Junior & Adult D3O Pro Thermal Hikepants



FEATURES:

- **X-FLEX:** 150% super-stretch External liquid seams for 100% water seal
- **THERMOSPAN:** ultimate insulation and warmth
- **D3O:** impact protection
- **POWER-TEX4:** highly durable and flexible seat & knees
- High waist to reduce drag
- Adjustable shoulder straps
- Articulated knee
- Windward CZ Pro power pads
- Non-petroleum based neoprene

COLOURS



● **Grey**
code: GM0360-A8GYG



SIZES: S / M / L / XL / XXL / XXXL

JUNIOR SIZES JM / JL

EVO 2 GM0376

3mm Hikepants



FEATURES:

- **THERMOSPAN:** ultimate insulation and warmth
- **SNAKESKIN:** DWR anti-abrasive coating
- **POWER-TEX4:** highly durable and flexible knees
- Fixed pads
- **DURATEX:** seat panel increased durability
- Adjustable shoulder strap
- Non-petroleum based neoprene

COLOURS



● **Gunmetal / Black**
code: GM0376-A7GUBK



SIZES: S / M / L / XL / XXL / XXXL

JUNIOR SIZES JS / JM / JL

STOKES GM0225

Trapeze Harness



FEATURES:

- Wide load bearing spreader bar
- Universal spreader bar attachments
- Padded sides
- Adjustable back pad
- Adjustable buckle fastening
- Fully adjustable for a personalised fit

COLOURS



● **Black**
code: GM0225-A3BKBK

SIZES: S - M / L-XL **JUNIOR SIZES** JL

EVO2 GM0374

Trapeze Harness



FEATURES:

- EVO2 load bearing spreader bar made from anti corrosive 316 stainless steel
- **KEVLAR:** abrasion resistant seat
- Adjustable velcro waist
- Coloured marker fitting system
- Fully adjustable air assisted lumbar back pad
- 2 point adjustable strap system
- Neoprene crotch & shoulder straps

COLOURS



● **Black**
code: GM0374-A7BKBK

SIZES: S - M / L-XL / XXL **JUNIOR SIZES** JL

EVO GM0345

Trapeze Harness



FEATURES:

- Load bearing spreader bar
- Velcro adjustable waist
- Padded sides
- Adjustable back pad
- Adjustable shoulder strap
- Fully adjustable for a personalised fit

COLOURS



● **Black**
code: GM0345-A3BKBK

SIZES: S - M / L-XL **JUNIOR SIZES** JL

PRO KNEEPADS GM0019

Knee Pads



FEATURES:

- KEVLAR: protects the knee from abrasion
- Double lined neoprene for durability
- Elasticated adjustable straps

COLOURS



● **Black**
code: GM0019-A3BKBK

SIZES: S / M / L

CZ PRO KNEEPADS GM0362

D30 Intelligent Foam Technology



FEATURES:

- KEVLAR: protects the knee from abrasion
- D30: ultimate impact protection
- Air-prene: for breathability and maximum freedom of movement
- Fully adjustable Velcro system- for custom fit

COLOURS



● **Black**
code: GM0362-A3BKBK

SIZES: S / M / L

CREW KIT

Gul Technical Apparel S/S 2016

QUICK DRY CAP & VISOR / TECH JUMPER / T-SHIRTS /
POLO SHIRTS / SHORTS



QUICK DRY CAP K6MM90

Cap with Cap Saver



FEATURES:

- Tactel fabric with a water repellent finish.
- Quick drying with 50+ UV protection.
- Reflective front peak
- Back adjustment system
- Removable cap saver with clip

COLOURS



Black / Yellow
code: K6MM90-A7BKYE



Silver / Red
code: K6MM90-A7SIRE

SIZES: ONE SIZE

QUICK DRY VISOR K6MM91

Visor with Visor Saver



FEATURES:

- Tactel fabric with a water repellent finish.
- Quick drying
- Reflective front peak
- Back adjustment system
- Removable visor saver with clip

COLOURS



Silver / Red
code: K6MM91-A7SIRE



Black / Yellow
code: K6MM91-A7BKYE

SIZES: ONE SIZE

CREW KIT TA0009

Code Zero Windproof Technical Jumper



- **GCX3 THERMAL:** 3 layer fleece lined fabric
- Breathable/Windproof
- **FLATLOCK:** seam construction
- ¼ Zip collar fastening
- Laminated sleeve pocket with bonded zip



Gunmetal
code: TA0009-A6GUGU



Bleached Sand
code: TA0009-A6SASA

SIZES: S / M / L / XL / XXL

CREW KIT TA0001

Code Zero Mens Short Sleeve T-Shirt



FEATURES:

- **FLATLOCK:** seam construction
- Reflective logos for visual safety
- Athletic seam design
- Mesh temperature regulation system
- CZ c60: Bamboo charcoal antibacterial fabric
- Contoured Fit: 3D contoured panel layout, engineered for enhanced movement
- SPF30: UV protection
- **CZ EVO MAIN MATERIAL:**
8% Spandex,
92% Polyester
- **CZ C60 MESH:**
50% Polyester,
50% bamboo charcoal

COLOURS



Black
code: TA0001-A5BKBK



Grey / Aqua
code: TA0001-A5GYAQ

SIZES: S / M / L / XL / XXL

CREW KIT TA0002

Code Zero Mens Long Sleeve T-Shirt



FEATURES:

- **FLATLOCK:** seam construction
- Reflective logos for visual safety
- Athletic seam design
- Mesh temperature regulation system
- CZ c60: Bamboo charcoal antibacterial fabric
- Contoured Fit: 3D contoured panel layout, engineered for enhanced movement
- SPF30: UV protection
- **CZ EVO MAIN MATERIAL:**
8% Spandex,
92% Polyester
- **CZ C60 MESH:**
50% Polyester,
50% bamboo charcoal

COLOURS



Grey / Aqua
code: TA0002-A5GYAQ



Black
code: TA0002-A5BKBK

SIZES: S / M / L / XL / XXL

CREW KIT TA0003

Code Zero Mens Polo Shirt



FEATURES:

- **FLATLOCK:** seam construction
- Reflective logos for visual safety
- Athletic seam design
- Mesh temperature regulation system
- CZ c60: Bamboo charcoal antibacterial fabric
- Contoured Fit: 3D contoured panel layout, engineered for enhanced movement
- SPF30: UV protection
- **CZ EVO MAIN MATERIAL:**
8% Spandex,
92% Polyester
- **CZ C60 MESH:**
50% Polyester,
50% bamboo charcoal

COLOURS



Black
code: TA0003-A5BKBK



Grey / Aqua
code: TA0003-A5GYAQ

SIZES: S / M / L / XL / XXL

CREW KIT TA0004

Code Zero Mens Shorts



FEATURES:

- Quick Dry Performance Dobby mechanical stretch fabric
- Diamond Rip-stop reinforced seat
- Secure low profile zip thigh pockets
- Mesh lined side pockets
- Contoured Fit: 3D contoured panel layout, engineered for enhanced movement
- Belt loops for secure fit
- SPF30: UV protection
- **CZ PD (Performance Dobby) MAIN MATERIAL:**
100% polyester doobby mechanical stretch
- **CZ DR (Diamond Rip-Stop) REINFORCEMENT:**
100% Nylon

COLOURS



Black
code: TA0004-A5BKBK



Grey / Black
code: TA0004-A5GYBK

SIZES: 30 / 32 / 34 / 36 / 38

CREW KIT TA0005

Ladies Code Zero Short Sleeve T-Shirt



FEATURES:

- **FLATLOCK:** seam construction
- Reflective logos for visual safety
- Athletic seam design
- Mesh temperature regulation system,
- CZ c60: Bamboo charcoal antibacterial fabric
- Contoured Fit: 3D contoured panel layout, engineered for enhanced movement
- SPF30: UV protection
- **CZ EVO MAIN MATERIAL:**
8% Spandex ,
92% Polyester
- **CZ C60 MESH:**
50% Polyester,
50% bamboo charcoal

COLOURS



Grey / Black
code: TA0005-A5GYBK



Black
code: TA0005-A5BKBK

SIZES: 8 / 10 / 12 / 14 / 16

CREW KIT TA0006

Ladies Code Zero Long Sleeve T-Shirt



FEATURES:

- **FLATLOCK:** seam construction
- Reflective logos for visual safety
- Athletic seam design
- Mesh temperature regulation system,
- CZ c60: Bamboo charcoal antibacterial fabric
- Contoured Fit: 3D contoured panel layout, engineered for enhanced movement
- SPF30: UV protection
- **CZ EVO MAIN MATERIAL:**
8% Spandex ,
92% Polyester
- **CZ C60 MESH:**
50% Polyester,
50% bamboo charcoal

COLOURS



Grey / Black
code: TA0006-A5GYBK



Black
code: TA0006-A5BKBK

SIZES: 8 / 10 / 12 / 14 / 16

CREW KIT TA0007

Ladies Code Zero Polo Shirt



FEATURES:

- **FLATLOCK:** seam construction
- Reflective logos for visual safety
- Athletic seam design
- Mesh temperature regulation system,
- CZ c60: Bamboo charcoal antibacterial fabric
- Contoured Fit: 3D contoured panel layout, engineered for enhanced movement
- SPF30: UV protection
- **CZ EVO MAIN MATERIAL:**
8% Spandex ,
92% Polyester
- **CZ C60 MESH:**
50% Polyester,
50% bamboo charcoal

COLOURS



Black
code: TA0007-A5BKBK



Grey / Black
code: TA0007-A5GYBK

SIZES: 8 / 10 / 12 / 14 / 16

CREW KIT TA0008

Ladies Code Zero Shorts



FEATURES:

- Quick Dry Performance Dobby mechanical stretch fabric
- Diamond Rip-stop reinforced seat
- Secure low profile zip thigh pockets
- Mesh lined side pockets
- Contoured Fit: 3D contoured panel layout, engineered for enhanced movement
- Belt loops for secure fit
- SPF30: UV protection
- **CZ PD (Performance Dobby) MAIN MATERIAL:**
100% polyester doobby mechanical stretch
- **CZ DR (Diamond Rip-Stop) REINFORCEMENT:**
100% Nylon

COLOURS



Black
code: TA0008-A5BKBK



Grey / Black
code: TA0008-A5GYBK

SIZES: 8 / 10 / 12 / 14 / 16



LAYERING

Gul Technical Apparel S/S 2016

CODE ZERO THERMO / VIPER RECORE / EVOTHERM /
HYDROSHIELD / POWERMATRIX / RESPONSE / XOLA

CODE ZERO AC0057

NEW

1mm Infinity Flex Flatlock Thermo Top



FEATURES:

- **FLATLOCK:** seam construction
- **I-FLEX:** 150% Two-tone Superstretch
- **X-FLEX THERMAL:** ultimate insulation & warmth
- **TITANIUM 2:** - reflects heat back in
- Windproof and water-resistant
- 50+ UVA and UVB protection
- TECH-NECK:** single layer glide-skin neckseal
- Non-petroleum based neoprene

COLOURS



● **Grey-marl**
code: AC0057-A9GYMR

SIZES: XS / S / M / L / XL / XXL

CODE ZERO AC0067

NEW

3mm Infinity Flex Blindstitched Thermo Top



FEATURES:

- **BLINDSTITCHED:** Seam construction
- **I-FLEX:** 150% Two-tone Superstretch
- **X-FLEX THERMAL:** ultimate insulation & warmth
- **TITANIUM 2:** - reflects heat back in
- Windproof and water-resistant
- 50+ UVA and UVB protection
- TECH-NECK:** single layer glide-skin neckseal
- Non-petroleum based neoprene

COLOURS



● **Grey-marl**
code: AC0067-A9GYMR

SIZES: XS / S / M / L / XL / XXL

VIPER RG0351

Recore Flatlock Long Sleeve Rashguard



FEATURES:

- **FLATLOCK:** seam construction
- UV shield: UPF 50+ sun protection
- 8oz Eco-therm fabric with nano bamboo charcoal lining
- Thumb loops
- 65% Recycled polyester, 6% Spandex, 29% bamboo

COLOURS



● **Black**
code: RG0351-A3BKBK

SIZES: S / M / L / XL / XXL

VIPER RG0359

Ladies Recore Flatlock Long Sleeve Rashguard



FEATURES:

- **FLATLOCK:** seam construction
- UV shield: UPF 50+ sun protection
- 8oz Eco-therm fabric with nano bamboo charcoal lining
- Thumb loops
- 65% Recycled polyester, 6% Spandex, 29% bamboo

COLOURS



● **Black**
code: RG0359-A3BKBK

SIZES: 8 / 10 / 12 / 14 / 16 / 18

EVOTHERM AC0049

NEW COLOUR

Flatlock Thermal Long Sleeve Rashguard



FEATURES:

- **FLATLOCK:** seam construction
- 8oz Evotherm fabric
- UV shield: UPF 50+ sun protection
- Thumb Loops

COLOURS



● **Black**
code: AC0049-A9BKBK

SIZES: S / M / L / XL / XXL

EVOTHERM AC0051

NEW COLOUR

Flatlock Thermal Short Sleeve Rashguard



FEATURES:

- **FLATLOCK:** seam construction
- 8oz Evotherm fabric
- UV shield: UPF 50+ sun protection

COLOURS



● **Black**
code: AC0051-A9BKBK

SIZES: S / M / L / XL / XXL

EVOTHERM AC0041

NEW COLOUR

Flatlock Trousers



FEATURES:

- **FLATLOCK:** seam construction
- 8oz Evotherm fabric
- UV shield: UPF 50+ sun protection

COLOURS



● **Black**
code: AC0041-A9BKBK

SIZES: S / M / L / XL / XXL

EVOTHERM AC0050

NEW COLOUR

Ladies Flatlock Thermal Long Sleeve Rashguard



FEATURES:

- **FLATLOCK:** seam construction
- 8oz Evotherm fabric
- UV shield: UPF 50+ sun protection
- Thumb Loops

COLOURS



● **Black**
code: AC0050-A9BKBK

SIZES: 8 / 10 / 12 / 14 / 16 / 18

EVOTHERM AC0052

NEW COLOUR

Ladies Flatlock Thermal Short Sleeve Rashguard



FEATURES:

- **FLATLOCK:** seam construction
- 8oz Evotherm fabric
- UV shield: UPF 50+ sun protection

COLOURS



● **Black**
code: AC0052-A9BKBK

SIZES: 8 / 10 / 12 / 14 / 16 / 18

EVOTHERM AC0062

NEW COLOUR

Junior Flatlock Thermal Long Sleeve Rashguard



FEATURES:

- **FLATLOCK:** seam construction
- 8oz Evotherm fabric
- UV shield: UPF 50+ sun protection
- Thumb Loops

COLOURS



● **Black**
code: AC0062-A9BKBK

JUNIOR SIZES JS / JM / JL / JXL / JXXL

EVOTHERM AC0063

NEW COLOUR

Junior Flatlock Thermal Short Sleeve Rashguard



FEATURES:

- **FLATLOCK:** seam construction
- 8oz Evotherm fabric
- UV shield: UPF 50+ sun protection

COLOURS



● **Black**
code: AC0063-A9BKBK

JUNIOR SIZES JS / JM / JL / JXL / JXXL

EVOTHERM AC0109

NEW COLOUR

Junior Flatlock Trousers



FEATURES:

- **FLATLOCK:** seam construction
- 8oz Evotherm fabric
- UV shield: UPF 50+ sun protection

COLOURS



● **Black**
code: AC0109-A9BKBK

JUNIOR SIZES JS / JM / JL / JXL / JXXL

EVOTHERM AC0054

Flatlock Thermal Long John



FEATURES:

- Flatlock durable seam construction
- UV shield: UPF 50+ sun protection
- 8oz Evotherm fabric
- Stretch shoulder opening for comfort
- Ankle loops
- Fly opening

COLOURS



Black
code: AC0054-A9BKBK

SIZES: XS S M L XL XXL



RACE BIB RG0353

Flatlock Bib



FEATURES:

- **FLATLOCK:** seam construction
- 92% Nylon / 8% Spandex
- UV shield: UPF 50+ sun protection

COLOURS



● Grey
code: RG0353-A3GYGY

SIZES: S-M / L-XL

CODE ZERO PRO RG0354

Sailing Long Sleeve Rashguard



FEATURES:

- **FLATLOCK:** seam construction
- 92% Nylon / 8% Spandex
- UV shield: UPF 50+ sun protection
- Opening to fit around the Trapeze Harness hook
- Aqua-Grip: hem reduces riding up

COLOURS



● Grey
code: RG0354-A5GYGY

SIZES: XS / S / M / L / XL / XXL

HYDROSHIELD PRO AC0107

Waterproof Thermal Flatlock Longjohn



FEATURES:

- **FLATLOCK:** seam construction
- **LIQUIDSEAM:** 100% Water seal
- **X-FLEX THERMAL:** shoulders
- Hydroshield 3.0: Three layer thermal fabric
- Four way stretch fabric
- Waterproof/Windproof/Breathable
- UV 50+ UPF protection
- **POWERTEX4:** knees for flexibility & durability
- **DURA-SKIN:** neoprene padded seat
- Windward CZ Pro power pad compatible (GM0372)
- Ergonomic fit

COLOURS



● Black
code: AC0107-A8BKBK



SIZES: S / M / L / XL / XXL

HYDROSHIELD PRO AC0089

Waterproof Thermal Long Sleeve Rashguard



FEATURES:

- **FLATLOCK:** seam construction
- **LIQUIDSEAM:** 100% Water seal
- Hydroshield 3.0: Three layer thermal fabric
- Four way stretch fabric
- Waterproof/Windproof/Breathable
- UV 50+ UPF protection
- **TECH-NECK:** single layer glide-skin neckseal

COLOURS



● **Black**
code: AC0089-A9BKBK

SIZES: S / M / L / XL / XXL

HYDROSHIELD PRO AC0095

Ladies Waterproof Thermal Long Sleeve Rashguard



FEATURES:

- **FLATLOCK:** seam construction
- **LIQUIDSEAM:** 100% Water seal
- Hydroshield 3.0: Three layer thermal fabric
- Four way stretch fabric
- Waterproof/Windproof/Breathable
- UV 50+ UPF protection
- **TECH-NECK:** single layer glide-skin neckseal

COLOURS



● **Black**
code: AC0095-A5BKBK

SIZES: 8 / 10 / 12 / 14 / 16 / 18

HYDROSHIELD PRO AC0090

Waterproof Thermal Short Sleeve Rashguard



FEATURES:

- **FLATLOCK:** seam construction
- **LIQUIDSEAM:** 100% Water seal
- Hydroshield 3.0: Three layer thermal fabric
- Four way stretch fabric
- Waterproof/Windproof/Breathable
- UV 50+ UPF protection
- **TECH-NECK:** single layer glide-skin neckseal
-

COLOURS



● **Black**
code: AC0090-A9BKBK

SIZES: S / M / L / XL / XXL

HYDROSHIELD PRO AC0096

Ladies Waterproof Thermal Short Sleeve Rashguard



FEATURES:

- **FLATLOCK:** seam construction
- **LIQUIDSEAM:** 100% Water seal
- Hydroshield 3.0: Three layer thermal fabric
- Four way stretch fabric
- Waterproof/Windproof/Breathable
- UV 50+ UPF protection
- **TECH-NECK:** single layer glide-skin neckseal

COLOURS



● **Black**
code: AC0096-A5BKBK

SIZES: 8 / 10 / 12 / 14 / 16 / 18

HYDROSHIELD PRO AC0091

Waterproof Thermal Leggings



FEATURES:

- **FLATLOCK:** seam construction
- **LIQUIDSEAM:** 100% Water seal
- Hydroshield 3.0: Three layer thermal fabric
- Waterproof/Windproof/Breathable
- UV 50+ UPF protection
- **DURA-SKIN:** neoprene padded knee & seat
- **GLIDESKIN:** sealed waist
- Adjustable Webbing belt

COLOURS



● **Black**
code: AC0091-A5BKBK

SIZES: S / M / L / XL / XXL

HYDROSHIELD PRO AC0097

Ladies Waterproof Thermal Leggings



FEATURES:

- **FLATLOCK:** seam construction
- **LIQUIDSEAM:** 100% Water seal
- Hydroshield 3.0: Three layer thermal fabric
- Waterproof/Windproof/Breathable
- UV 50+ UPF protection
- **DURA-SKIN:** neoprene padded knee & seat
- **GLIDESKIN:** sealed waist
- Adjustable Webbing belt

COLOURS



● **Black**
code: AC0097-A5BKBK

SIZES: 8 / 10 / 12 / 14 / 16 / 18

POWER MATRIX RG0360

Performance Compression Top



FEATURES:

- **FLATLOCK:** seam construction
- 80% Nylon, 20% Spandex
- **POWER-MATRIX TPU** (Thermoplastic Polyurethane) for core stability and improved posture
- Anatomical fit reduces delayed onset muscle soreness
- Unisex Fit

COLOURS



● **Black**
code: RG0360-A4BKBK

SIZES: S / M / L / XL / XXL

POWER MATRIX RG0361

Performance Compression Trousers



FEATURES:

- **FLATLOCK:** seam construction
- 80% Nylon, 20% Spandex
- **POWER-MATRIX TPU** (Thermoplastic Polyurethane) for core stability and improved posture
- Anatomical fit reduces delayed onset muscle soreness
- Unisex Fit

COLOURS



● **Black**
code: RG0361-A4BKBK

SIZES: S / M / L / XL / XXL

RESPONSE RE7302

NEW FEATURES

1.5mm Flatlock Vest



FEATURES:

- **FLATLOCK:** seam construction
- **SIDE1: RS-FLEX:** 150% Textured Superstretch
- **SIDE2: ∞FLEX:** 150% Two-tone Superstretch
- **TITANIUM 2:** lined neoprene
- Reversible- climate control system
- Short lock Cord fastening system
- Non-petroleum based neoprene

COLOURS



REVERSIBLE
Black / Grey
code: RE7302-A9BKGY

SIZES: S / M / L / XL / XXL

RESPONSE RE8302

2mm Neoprene Shorts



FEATURES:

- **FLATLOCK:** seam construction
- **D-FLEX:** panels for durability
- **TITANIUM 2:** lined neoprene
- Non-petroleum based neoprene
- Shock cord adjustable waist

COLOURS



Black
code: RE8302-A6BKBK

SIZES: S / M / L / XL / XXL

XOLA RG0343

Lycra Shorts



FEATURES:

- **FLATLOCK:** seam construction
- 92% Nylon / 8% Spandex
- UV shield: UPF 50+ sun protection

COLOURS



Black
code: RG0343-A7BKBK

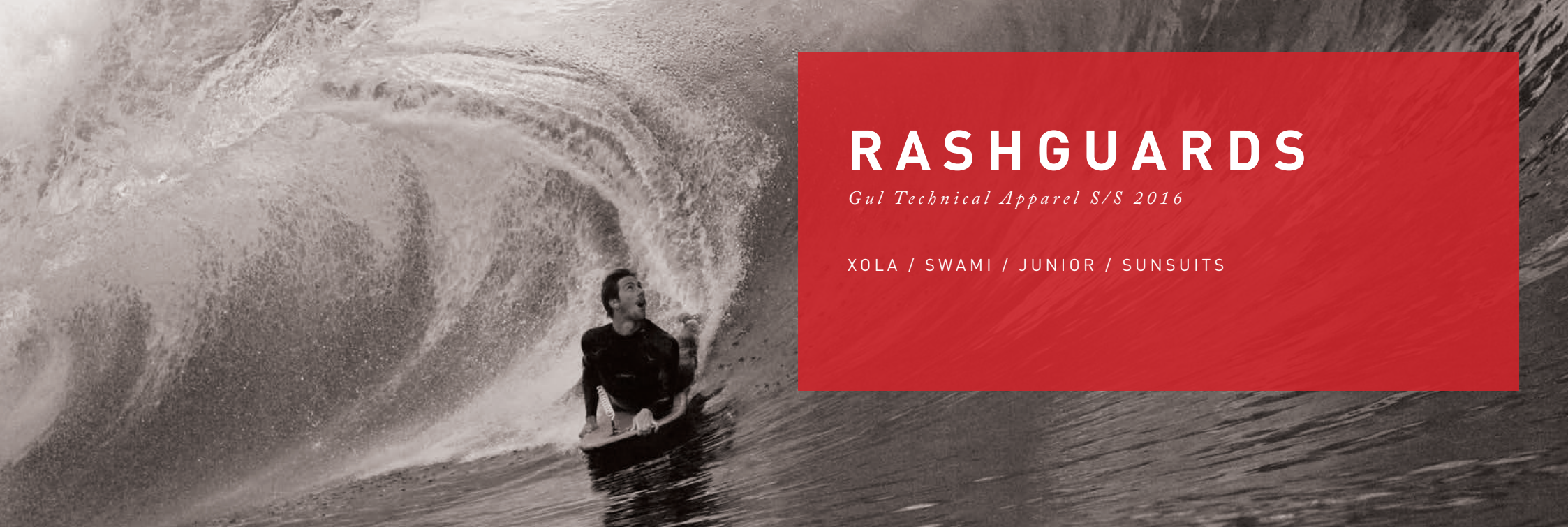
SIZES: S / M / L / XL / XXL



RASHGUARDS

Gul Technical Apparel S/S 2016

XOLA / SWAMI / JUNIOR / SUNSUITS



UPF50+

Protect your skin

UPF protection refers to any type of apparel that protects against damaging UVA & UVB rays.

UPF 50+ is the maximum protection offered from any sun protection apparel, blocking 97.5% of the sun's UV rays. Everyday clothing offers very little sun protection. For example a typical summer t-shirt offers only 7-15% protection and even less when wet, against the harmful rays. For exposed areas of the body, not covered by the garment you should apply SPF cream that is suitable for your skin type.



- UPF50+
- HYDROPHOBIC
- 4 WAY STRETCH
- COTTON FEEL

INFINITY FLEX

Fabric

The New *I-FLEX* fabric is featured across our latest range of rashguards. Utilising the research and development that has been applied to our exclusive *I-FLEX* Neoprene we have applied the same technology to rashguards.

I-FLEX series rash guards provides hydrophobic quick dry capability with a UV 50+ protection against harmful UV rays. Our new *I-FLEX* fabric is the softest cotton like feel fabric on the market. The softer more supple feel is less likely to irritate the skin contributing to longer lasting comfort.

XOLA RG0338

NEW

Short Sleeve Rashguard



FEATURES:

- **FLATLOCK:** seam construction
- **I-FLEX:** 92% Nylon / 8% Spandex
- UV shield: UPF 50+ sun protection

COLOURS



Black
code: RG0338-A9BKBK



Crip / Black
code: RG0338-A9CPBK



Marl / Black
code: RG0338-A9MRBK



Ash / Red
code: RG0338-A9ASRE

SIZES: S / M / L / XL / XXL

XOLA RG0339

NEW

Long Sleeve Rashguard



FEATURES:

- **FLATLOCK:** seam construction
- **I-FLEX:** 92% Nylon / 8% Spandex
- UV shield: UPF 50+ sun protection

COLOURS



Marl / Black
code: RG0339-A9MRBK



Crip / Black
code: RG0339-A9CPBK



Black
code: RG0339-A9BKBK



Ash / Red
code: RG0339-A9ASRE

SIZES: S / M / L / XL / XXL

SWAMI RG0331

NEW

Ladies Long Sleeve Rashguard



FEATURES:

- **FLATLOCK:** seam construction
- **I-FLEX:** 92% Nylon / 8% Spandex
- UV shield: UPF 50+ sun protection

COLOURS



Navy / Coral
code: RG0331-A9NACR



Turquoise / Marl
code: RG0331-A9TUMR



Black
code: RG0331-A9BKBK



Marl / Black
code: RG0331-A9MRBK

SIZES: 8 / 10 / 12 / 14 / 16 / 18

SWAMI RG0330

NEW

Ladies Short Sleeve Rashguard



FEATURES:

- **FLATLOCK:** seam construction
- **I-FLEX:** 92% Nylon / 8% Spandex
- UV shield: UPF 50+ sun protection

COLOURS



Turquoise / Marl
code: RG0330-A9TUMR



Navy / Coral
code: RG0330-A9NACR



Black
code: RG0330-A9BKBK



Marl / Black
code: RG0330-A9MRBK

SIZES: 8 / 10 / 12 / 14 / 16 / 18

JUNIOR RG0341

NEW

Junior Short Sleeve Rashguard



FEATURES:

- FLATLOCK: seam construction
- 92% Nylon / 8% Spandex
- UV shield: UPF 50+ sun protection

COLOURS



Marl / Crip
code: RG0341-A9MRCP



Red / Black
code: RG0341-A9REBK

JUNIOR SIZES

JS / JM / JL / JXL

JUNIOR RG0344

NEW

Junior Long Sleeve Rashguard



FEATURES:

- FLATLOCK: seam construction
- 92% Nylon / 8% Spandex
- UV shield: UPF 50+ sun protection

COLOURS



Red / Black
code: RG0344-A9REBK



Marl / Crip
code: RG0344-A9MRCP

JUNIOR SIZES

JS / JM / JL / JXL

JUNIOR RG0345

NEW

Girls Junior Short Sleeve Rashguard



FEATURES:

- FLATLOCK: seam construction
- 92% Nylon / 8% Spandex
- UV shield: UPF 50+ sun protection

COLOURS



Turquoise / Navy
code: RG0345-A9TUNA



Coral / Turquoise
code: RG0345-A9CRTU



Marl / Black
code: RG0345-A9MRBK

JUNIOR SIZES

JS / JM / JL / JXL

JUNIOR RG0346

NEW

Girls Junior Long Sleeve Rashguard



FEATURES:

- FLATLOCK: seam construction
- 92% Nylon / 8% Spandex
- UV shield: UPF 50+ sun protection

COLOURS



Marl / Black
code: RG0346-A9MRBK



Coral / Turquoise
code: RG0346-A9CRTU



Turquoise / Navy
code: RG0346-A9TUNA

JUNIOR SIZES

JS / JM / JL / JXL



SUN SUIT RG0349

NEW

Childrens Sun suit

FEATURES:

- **FLATLOCK:** seam construction
- 92% Nylon / 8% Spandex
- UV shield: UPF 50+ sun protection
- Front zip for ease of entry



COLOURS



Red / Grey
code: RG0349-A9REGY



Turquoise / Pink
code: RG0349-A9TUPI

SIZES: 6MTHS- 1YEAR / 1-2YR / 2-3YR / 3-4YR / 4-5YR



BOOTS & FOOTWEAR

Gul Technical Apparel S/S 2016

BOOTS / SLIPPERS / SOCKS / DECK SHOES & BOOTS /
AQUA SHOE / HYDRO SHOE

GUL VIPER

5mm Split Toe Boot

Gul's latest boot evolution, new for Spring Summer 2016. The Viper Boot features our exclusive bolt-dry, quick-dry thermal lining as well as some additional brand new features.

Brand new features include:

RS-FLEX- 150% Textured Stretch Neoprene, 20% lighter 30% less water Absorption.

Razorsole: razor cut channels increase grip and stability of the sole. Giving your feet maximum traction.

G-tape: fused seams offer additional reinforcement creating a longer lasting boot.



RS FLEX



RAZORSOLE



G-TAPE

VIPER B01259

5mm Split Toe Boot

NEW FEATURES

FEATURES:

- **NEONSEAM**: super thin 4mm liquid seam
- **RS-FLEX**: 150% Textured Superstretch
- **BOLT DRY**: Thermal quick dry core
- **AQUA RING**: for ultimate flush barrier
- **G-TAPE**: Inner waterproof X-Flex taping fuses seams together for additional reinforcement
- **RAZORSOLE**: increased grip and stability
- Flexible lightweight split-toe boot
- Arch support
- Velcro adjustable ankle straps for secure fit
- **H10**: bare foot feel sole

COLOURS



Black / Yellow
code: B01259 -A9BKYE

SIZES: 4UK - 13UK





RECOIL



LEASH GUARD



H10

FLEXOR

Flexor Split Toe Boot

The lightest thermal boot on the market! New for Spring Summer 2016 the Flexor Boot, features new & exclusive Recoil technology.

Recoil: is a 3D print band positioned over the top of the foot. This acts in a similar way to the retinaculum that helps keep your tendons in place, preventing rolling of the foot.

H10: bare foot feel rubber sole is ultra sensitive soft and flexible, but still offers the same outstanding grip expected from a thicker sole

Leash Guard: has been added to the flexor to prevent annoying leash jams.

FLEXOR B01299

NEW

3mm Split Toe Boot



FEATURES:

- **BLINDSTITCHED:** Seam construction
- **RS-FLEX:** 150% textured superstretch
- **THERMOSPAN:** core central heating system.
- **POWERTEX4:** reinforcement on frontside of boot
- **G-TAPE:** Inner waterproof X-Flex taping fuses seams together for additional reinforcement
- **RECOIL:** foot support band
- **H10:** bare foot feel sole
- **LEASHGUARD:** prevents leash jams

COLOURS



Black
code: B01229-A9BKBK

SIZES: 4UK - 13UK



FLEXOR B01300

NEW

5mm Split Toe Boot



FEATURES:

- **BLINDSTITCHED:** Seam construction
- **RS-FLEX:** 150% textured superstretch
- **THERMOSPAN:** core central heating system.
- **POWERTEX4:** reinforcement on frontside of boot
- **G-TAPE:** Inner waterproof X-Flex taping fuses seams together for additional reinforcement
- **RECOIL:** foot support band
- **H10:** bare foot feel sole
- **LEASHGUARD:** prevents leash jams

COLOURS



Black
code: B01300-A9BKBK

SIZES: 4UK - 13UK



POWER BOOT B 0 1 2 6 3

5mm Round Toe Boot



FEATURES:

- **BLINDSTITCHED:** Seam construction
- **5MM D-FLEX:** Durable neoprene
- **THERMOSPAN:** core central heating system.
- **TITANIUM 2:** lining reflects the heat back in
- Free-flex heel and ankle entry
- Reinforced heel and toe
- Hook and loop ankle straps

COLOURS



● Black / Grey
code: BO1263-A8BKGY

SIZES: 4UK - 13UK

POWER BOOT B 0 1 2 6 4

Junior 5mm Round Toe Boot



FEATURES:

- **BLINDSTITCHED:** Seam construction
- **X-FLEX:** 150% super-stretch entry system
- **5MM D-FLEX:** Durable neoprene
- **THERMOSPAN:** core central heating system.
- **TITANIUM 2:** lining reflects the heat back in
- Free-flex heel and ankle entry
- Reinforced heel and toe

COLOURS



● Black / Grey
code: BO1264-A8BKGY

JUNIOR SIZES JS / JM / JL / JXL / JXXL

POWER SLIPPER B 0 1 2 7 3

Adult 3mm Power Slipper



FEATURES:

- **BLINDSTITCHED:** Seam construction
- **3MM D-FLEX:** Durable neoprene
- **THERMOSPAN:** core central heating system.
- **TITANIUM 2:** lining reflects the heat back in
- Elasticated & adjustable ankle cord for secure fit
- Reinforced heel and toe
- Durable flexible sole
- Drain holes

COLOURS



● Black / Grey
code: BO1273-A8BKGY

SIZES: 4UK - 13UK

POWER SLIPPER B 0 1 2 6 7

Junior 3mm Power Slipper



FEATURES:

- **BLINDSTITCHED:** Seam construction
- **3MM D-FLEX:** Durable neoprene
- **THERMOSPAN:** core central heating system.
- **TITANIUM 2:** lining reflects the heat back in
- Elasticated & adjustable ankle cord for secure fit
- Reinforced heel and toe
- Durable flexible sole
- Drain holes

COLOURS



● Black / Grey
code: BO1267-A8BKGY

JUNIOR SIZES JS / JM / JL / JXL / JXXL

STRAPPED SLIPPER B 0 1 2 6 5

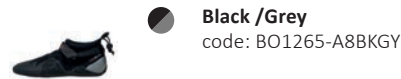
3mm Strapped Power Slipper



FEATURES:

- **BLINDSTITCHED:** Seam construction
- **3MM D-FLEX:** Durable neoprene
- **THERMOSPAN:** core central heating system.
- **TITANIUM 2:** lining reflects the heat back in
- Hard wearing Nylon front panel
- Adjustable ankle/heel closure
- Reinforced heel and toe
- Drain holes

COLOURS



Black / Grey
code: BO1265-A8BKGY

SIZES: 4UK - 13UK

WINDWARD B 0 1 2 9 8

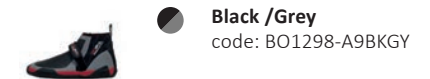
Master Hike Shoe

NEW



FEATURES:

- **BLINDSTITCHED:** Seam construction
- **5MM G-FLEX:** 100% stretch neoprene
- **THERMOSPAN:** core central heating system.
- **TITANIUM 2:** lining reflects the heat back in
- **G-TAPE:** Inner waterproof X-Flex taping
- Hiking system incorporated
- High grip contoured articulated sole
- Adjustable forefoot strap
- Reinforced heel and toe



Black / Grey
code: BO1298-A9BKGY

SIZES: 4UK - 13UK

ALL PURPOSE B 0 1 2 7 6

5mm All Purpose Boot



FEATURES:

- **BLINDSTITCHED:** Seam construction
- **5MM D-FLEX:** Durable neoprene
- **THERMOSPAN:** core central heating system.
- Velcro zip strap for secure fit
- YKK zip entry with neoprene gusset back up
- Reinforced upper, toe and heel
- Durable non-slip sole

COLOURS



Black / Grey
code: BO1276-A8BKGY

SIZES: 4UK - 13UK **JUNIOR SIZES** 1UK-3UK

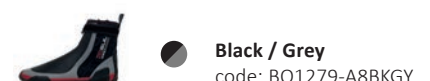
WINDWARD B 0 1 2 7 9

Pro Hiking Boot



FEATURES:

- **BLINDSTITCHED:** Seam construction
- **5MM G-FLEX:** 100% stretch neoprene
- **THERMOSPAN:** core central heating system.
- **TITANIUM 2:** lining reflects the heat back in
- Hiking system incorporated
- High grip contoured articulated sole
- Adjustable ankle strap
- Reinforced heel and toe



Black / Grey
code: BO1279-A8BKGY

SIZES: 4UK - 13UK

POWER SOCK B01270

Blindstitch 4mm Power Sock



FEATURES:

- **BLINDSTITCHED:** construction
- **4MM D-FLEX:** Durable neoprene
- **TITANIUM 2:** lining reflects the heat back in
- Free-flex heel and ankle entry
- **DURA-SKIN:** sole print

COLOURS



Black / Red
code: B01270-A3BKRE

SIZES: S / M / L / XL

POWER SOCK B01271

Flatlock 0.5mm Power Sock



FEATURES:

- **FLATLOCK:** seam construction
- **0.5MM D-FLEX:** Durable neoprene
- **TITANIUM 2:** lining reflects the heat back in
- Free-flex heel and ankle entry
- **DURA-SKIN:** sole print

COLOURS



Black / Red
code: B01271-A3BKRE

SIZES: S / M / L / XL

DRYSUIT SOCK AC0064

Adult & Junior Stretch Drysuit Socks



FEATURES:

- **FLATLOCK:** seam construction
- 92% Nylon / 8% Spandex
- Protects latex drysuit socks/seals

COLOURS



Black
code: AC0064-A3BKBK

SIZES: S-M / L-XL **JUNIOR SIZES** J

ECOTHERM SOCKS AC0085

Bamboo Thermal Socks



FEATURES:

- **FLATLOCK:** seam construction
- 8oz ECO-THERM fabric with nano bamboo charcoal lining
- 65% polyester / 6% Spandex / 29% bamboo
- **GLIDESKIN:** ankle seal
- Protects latex drysuit socks/seals

COLOURS



Black
code: AC0085-A4BKBK

SIZES: S-M / L-XL **JUNIOR SIZES** J

FASTNET BOOT DS1005

Cordura & Leather Boot



FEATURES:

- GCX3: waterproof wicking membrane to keep feet dry and warm
- Flexible force lasting (strobel) construction
- **CORDURA** /Premium leather upper
- Corrosive-resistant eyelets (NON MAGNETIC)
- Removable, cushioned EVA foot bed
- Gul marine sole with slip-resistant, non-marking Siped Rubber

COLOURS



Tan / Navy
code: DS1005-A5TANA

SIZES: 5UK-13UK

FALMOUTH DS1002

Leather Deck Shoe



FEATURES:

- Flexible force lasting (strobel) construction
- Premium leather upper with breathable mesh panels
- Functional lacing system
- Corrosive-resistant eyelets
- Removable, cushioned EVA foot bed
- Side wall stitched Gul marine sole with slip-resistant, non-marking Siped Rubber
- Gul green & red signature flag detail

COLOURS



Tan
code: DS1002-A3TATA

SIZES: 4UK-12UK

DECK BOOT GM0164

Deck Boot



FEATURES:

- Waterproof boot
- Adjustable padded top
- Non-slip razor cut sole
- Broad fit
- Quick-dry lining
- Removable cushioned inner sole
- Reinforced heel and toe

COLOURS



Navy / Charcoal
code: GM0164-A3NACH

SIZES: 5UK-13UK

PORTLAND DS1001

Canvas Deck Shoe



FEATURES:

- Vulcanized construction provides a secure bond between upper and outer sole
- High quality cotton canvas upper
- Gul green & red signature eyelet detail
- Padded tongue and collar for extra comfort
- Non-Marking, rubber outer sole with target zig-zag grip for ultimate dry / wet traction

COLOURS



Denim / Red
code: DS1001-A3DERE

SIZES: 4UK-12UK

AQUA SHOE B01257

Adult Aqua Shoe



FEATURES:

- Fully elasticated and adjustable ankle cord
- Durable flexible sole
- Spacer mesh outer for quick draining and drying



COLOURS



● Black / Charcoal
code: B01257-A3BKCH

SIZES: 6UK - 11UK

AQUA SHOE B01256

Junior Aqua Shoe



FEATURES:

- Fully elasticated and adjustable ankle cord
- Durable flexible sole
- Spacer mesh outer for quick draining and drying
- Junior sizes Red/Charcoal



COLOURS



● Red / Charcoal
code: B01256-A3RECH

JUNIOR SIZES J6 - J13 / J1 - J5

HYDRO SHOE DS1004

Aqua Grip Shoe



NEW COLOUR

FEATURES:

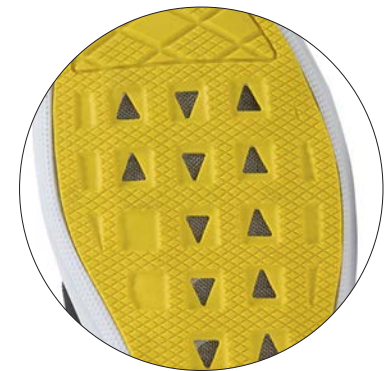
- 100% Nylon Mesh upper
- AQUA SOLE: with water draining system
- Complete with second contrast lace option



COLOURS



● Black / Yellow
code: DS1004-A9BKYE



SIZES: 4UK - 11UK

ACCESSORIES

Gul Technical Apparel S/S 2016

GLOVES / HOODS & HATS / ROOF RACK STRAPS & PADS /
DRYBAGS & LUGGAGE / BUOYANCY AIDS /
HELMETS / KAYAK

DRY GLOVE GL1233

Adult & Junior 2.5mm Liquidseam B/S Neoprene Glove



FEATURES:

- **BLINDSTITCHED:** Seam construction
- **LIQUIDSEAM:** 100% Water seal
- **2.5MM D-FLEX:** Durable neoprene
- **TITANIUM 2:** lining reflects the heat back in
- Pre-shaped for ultimate comfort
- Adjustable wrist strap
- Dry inner wrist gasket
- Extended wrists providing a better seal
- Non-slip durable palms

COLOURS



Black / Red
code:GL1233-A6BKRE

SIZES: S / M / L / XL **JUNIOR SIZES** JM / JL / JXL

WINDWARD GL1247 JUNIOR GL1249

1.5mm Liquidseam B/S Sailing Glove



FEATURES:

- **BLINDSTITCHED:** Seam construction
- **LIQUIDSEAM:** 100% Water seal
- **2.5MM D-FLEX:** Durable neoprene
- **TITANIUM 2:** lining reflects the heat back in
- **DURA-TEX:** palm and knuckle
- **POWERGRIP:** high power palm grip
- Heat retention fibre lining
- Pre-shaped for ultimate comfort

COLOURS



Grey / Black
code: GL1247-A5GYBK

SIZES: S / M / L / XL **JUNIOR SIZES** JS / JM / JL

FLEXOR III GL1225

NEW

3mm Liquidseam Blindstitched Glove



FEATURES:

- **BLINDSTITCHED:** Seam construction
- **LIQUIDSEAM:** 100% Water seal
- **X-FLEX:** 150% super-stretch
- **G-TAPE:** Inner waterproof X-Flex taping
- **BOLT DRY+:** Thermal quick dry core
- **TITANIUM 2:** lining reflects the heat back in
- **AQUA RING:** for ultimate flush barrier
- Pre-shaped for ultimate comfort
- Ultra-grip-flex palm gives grip and durability

COLOURS



● **Black**
code: GL1225-A9BKBK

SIZES: S / M / L / XL **JUNIOR SIZES** JM / JL

POWER GLOVE GL1229

5mm Blindstitched Glove



FEATURES:

- **BLINDSTITCHED:** Seam construction
- **5MM D-FLEX:** Durable neoprene
- **THERMOSPAN:** Dorsal hand panel, Lightweight thermal insulation
- **TITANIUM 2:** lining reflects the heat back in
- Pre-shaped for ultimate comfort
- Ultra-grip-flex palm gives grip and durability

COLOURS



● **Black**
code: GL1229-A6BKBK

SIZES: XS / S / M / L / XL

POWER GLOVE GL1230

3mm Blindstitched Glove



FEATURES:

- **BLINDSTITCHED:** Seam construction
- **3MM D-FLEX:** Durable neoprene
- **THERMOSPAN:** Dorsal hand panel, Lightweight thermal insulation
- **TITANIUM 2:** lining reflects the heat back in
- Glued and Blindstitched to minimise flush
- Pre-shaped for ultimate comfort
- Ultra-grip-flex palm gives grip and durability

COLOURS



● **Black**
code: GL1230-A6BKBK

SIZES: XS / S / M / L / XL

POWER GLOVE GL1231

Junior 3mm Blindstitched Glove



FEATURES:

- **BLINDSTITCHED:** Seam construction
- **3MM D-FLEX:** Durable neoprene
- **THERMOSPAN:** Dorsal hand panel, Lightweight thermal insulation
- **TITANIUM 2:** lining reflects the heat back in
- Glued and Blindstitched to minimise flush
- Pre-shaped for ultimate comfort
- Ultra-grip-flex palm gives grip and durability

COLOURS



● **Black**
code: GL1231-A6BKBK

JUNIOR SIZES JS / JM / JL

SHORT FINGER GL1242

Adult & Junior Winter Short Finger Glove



FEATURES:

- D-FLEX: Durable neoprene backed
- Soft Amara Palm with foam padding
- Adjustable wrist strap
- Half-fingers
- Grip Patch
- Pre-Shaped for comfort

COLOURS



● Black / Charcoal
code:GL1242-A3BKCH

SIZES: S / M / L / XL JUNIOR SIZES JS / JM / JL

FULL FINGER GL1238

Adult & Junior Winter Full Finger Glove



FEATURES:

- D-FLEX: Durable neoprene backed
- Soft Amara Palm with foam padding
- Adjustable wrist strap
- Full fingers and thumb
- Grip Patch
- Pre-Shaped for comfort

COLOURS



● Black / Charcoal
code:GL1238-A3BKCH

SIZES: S / M / L / XL JUNIOR SIZES JS / JM / JL

THREE FINGER GL1240

Adult & Junior Winter Three Finger Glove



FEATURES:

- D-FLEX: Durable neoprene backed
- Soft Amara Palm with foam padding
- Adjustable wrist strap
- Half-Index finger and thumb
- Grip Patch
- Pre-Shaped for comfort

COLOURS



● Black / Charcoal
code: GL1240-A3BKCH

SIZES: S / M / L / XL JUNIOR SIZES JS / JM / JL

SHORT FINGER GL1243

Adult & Junior Summer Short Finger Glove



FEATURES:

- Spandex backed
- Soft Amara Palm with foam padding
- Adjustable wrist strap
- Half-fingers
- Grip Patch
- Pre-Shaped for comfort

COLOURS



● Black / Charcoal
code: GL1243-A3BKCH

SIZES: S / M / L / XL JUNIOR SIZES JS / JM / JL

THREE FINGER GL1241

Adult & Junior Summer Three Finger Glove



FEATURES:

- Spandex backed
- Soft Amara Palm with foam padding
- Adjustable wrist strap
- Half-Index finger and thumb
- Grip Patch
- Pre-Shaped for comfort

COLOURS



● Black / Charcoal
code: GL1241-A3BKCH

SIZES: S / M / L / XL **JUNIOR SIZES** JS / JM / JL

FULL FINGER GL1239

Adult & Junior Summer Full Finger Glove



FEATURES:

- Spandex backed
- Soft Amara Palm with foam padding
- Adjustable wrist strap
- Full fingers and thumb
- Grip Patch
- Pre-Shaped for comfort

COLOURS



● Black / Charcoal
code: GL1239-A3BKCH

SIZES: S / M / L / XL **JUNIOR SIZES** JS / JM / JL

EVO2 SHORT FINGER GL1289

Adult & Junior Pro Winter Short Finger Glove



FEATURES:

- D-FLEX: Durable neoprene backed
- Seamless Amara fingers
- POWERGRIP: durable reinforcement
- Adjustable wrist strap
- Half-fingers
- Pre-Shaped for comfort
- Gul green & red signature fingers

COLOURS



● Black / Red
code: GL1289-A8BKRE

SIZES: S / M / L / XL **JUNIOR SIZES** JS / JM / JL

EVO2 THREE FINGER GL1291

Adult & Junior Pro Winter Three Finger



FEATURES:

- D-FLEX: Durable neoprene backed
- Seamless Amara fingers
- POWERGRIP: durable reinforcement
- Adjustable wrist strap
- Half-Index finger and thumb
- Pre-Shaped for comfort
- Gul green & red signature fingers

COLOURS



● Black / Red
code: GL1291-A8BKRE

SIZES: S / M / L / XL **JUNIOR SIZES** JS / JM / JL 89

EV02 FULL FINGER GL1293

Adult & Junior Pro Winter Full Finger Glove



FEATURES:

- D-FLEX: Durable neoprene backed
- Seamless Amara fingers
- POWERGRIP: durable reinforcement
- Adjustable wrist strap
- Full fingers and thumb
- Pre-Shaped for comfort
- Gul green & red signature fingers

COLOURS



● Black / Red
code: GL1293-A8BKRE

SIZES: S / M / L / XL **JUNIOR SIZES** JS / JM / JL

EV02 SHORT FINGER GL1288

Adult & Junior Pro Summer Short Finger



FEATURES:

- Spandex backed
- Seamless Amara fingers
- POWERGRIP: durable reinforcement
- Adjustable wrist strap
- Half-fingers
- Pre-Shaped for comfort
- Gul green & red signature fingers

COLOURS



● Black / Yellow
code: GL1288-A8BKYE

SIZES: S / M / L / XL **JUNIOR SIZES** JS / JM / JL

EV02 THREE FINGER GL1290

Adult & Junior Pro Summer Three Finger



FEATURES:

- Spandex backed
- Seamless Amara fingers
- POWERGRIP: durable reinforcement
- Adjustable wrist strap
- Half-Index finger and thumb
- Pre-Shaped for comfort
- Gul green & red signature fingers

COLOURS



● Black / Yellow
code: GL1290-A8BKYE

SIZES: S / M / L / XL **JUNIOR SIZES** JS / JM / JL

EV02 FULL FINGER GL1292

Adult & Junior Pro Summer Full Finger Glove



FEATURES:

- Spandex backed
- Seamless Amara fingers
- POWERGRIP: durable reinforcement
- Adjustable wrist strap
- Full fingers and thumb
- Pre-Shaped for comfort
- Gul green & red signature fingers

COLOURS



● Black / Yellow
code: GL1292-A8BKYE

SIZES: S / M / L / XL **JUNIOR SIZES** JS / JM / JL 90

EVOGRIP GL1295

Latex Palm Glove

NEW



FEATURES:

- FINE WRINKLE PALM: Latex palm ultimate grip and durability
- COTTON LINER: No seams, additional comfort
- WET & DRY: Grip in all conditions
- COLOUR CODED: Wrist bands for size
- Latex fingers are easy to cut & customise, if you prefer short finger gloves

COLOURS



● Black
code: GL1295-A9BKBK

SIZES: S / M / L / XL

PEAKED CAP H00305

3mm Blindstitched Peaked Surf Cap



FEATURES:

- BLINDSTITCHED: Seam construction
- BOLT DRY: Thermal quick dry core
- TITANIUM 2: reflects heat back in
- MESH: side panels to prevent wind chill
- Peaked design minimises water run off

COLOURS



● Black
code: H00305-A6BKBK

SIZES: XS / S / M / L

PEAKED HOOD H00312

3mm Blindstitched Peaked Surf Hood



FEATURES:

- BLINDSTITCHED: Seam construction
- BOLT DRY: Thermal quick dry core
- TITANIUM 2: reflects heat back in
- MESH: side panels to prevent wind chill
- Peaked design minimises water run off

COLOURS



● Black
code: H00312-A6BKBK

SIZES: S / M / L

TWIN NECK HOOD H00309

3mm Blindstitched Hood



FEATURES:

- BLINDSTITCHED: Seam construction
- BOLT DRY: Thermal quick dry core
- TITANIUM 2: reflects heat back in
- SNAKESKIN: water repellent membrane
- Twin-neck design for ultimate seal
- Peaked design minimises water run off

COLOURS



● Black
code: H00309-A6BKBK

SIZES: S / M / L

NECK GAITER AC0073

Softshell Neck Gaiter



FEATURES:

- Taped seams for 100% waterseal
- GCX3S: Waterproof, windproof & breathable softshell fabric
- Micro fleece lining for ultimate insulation

COLOURS



- **Black**
code: AC0073-A7BKBK

SIZES: ONE SIZE

BEANIE AC0072

Softshell Beanie



FEATURES:

- Taped seams for 100% waterseal
- GCX3S: Waterproof, windproof & breathable softshell fabric
- Micro fleece lining

COLOURS



- **Black**
code: AC0072-A7BKBK

SIZES: ONE SIZE

SPECSAVER AC001

Sunglasses/ Glasses Saver



FEATURES:

- **D-FLEX:** Durable neoprene
- Attaches to glasses to prevent loss

code: AC001-A2BKBK

SIZES: ONE SIZE

REPAIR KIT AC0098

Neoprene Repair Kit



FEATURES:

- 1x Tube of Black Witch Neoprene Glue
- 1x Application Brush
- 3x 1" Neoprene Discs
- 3x 1½" Neoprene Discs
- 3x 2" Neoprene Discs
- 1 X 12" Neoprene Tape

code: AC0098

ROOF RACK STRAPS AC002

3m Pair of Webbing Roof Rack Straps



FEATURES:

- 2x 3m X 25mm Webbing roof rack straps
- Protective neoprene sleeve buckle covers
- Strong & Durable Webbing
- Carry case

COLOURS



- **Black**
code: AC002-A6BKBK

SIZES: ONE SIZE

ROOF RACK STRAPS AC005

5m Pair of Webbing Roof Rack Straps



FEATURES:

- 2x 5m X 35mm Webbing roof rack straps
- Protective neoprene sleeve buckle covers
- Strong & Durable Webbing
- Carry case

COLOURS



- **Black**
code: AC005-A6BKBK

SIZES: ONE SIZE

ROOF RACK PADS AC0101

50cm Pair of Roof Rack Pads



FEATURES:

- 2x 50CM roof rack pads
- Fit a wide range of roof bars and racks
- Super tough diamond ripstop fabric
- Padded to help prevent damage to load
- Signature red secure Velcro fastening

COLOURS



- **Black**
code: AC0101-A7BKBK

SIZES: ONE SIZE

ROOF RACK PADS AC0102

100cm Pair of Roof Rack Pads



FEATURES:

- 2x 100CM roof rack pads
- Fit a wide range of roof bars and racks
- Super tough diamond ripstop fabric
- Padded to help prevent damage to load
- Signature red secure Velcro fastening

COLOURS



- **Black**
code: AC0102-A7BKBK

SIZES: ONE SIZE

2L VAPOR CZ LU0162

Light Weight Dry Bag



FEATURES:

- TPU coated 40D Polyester
- Roll down dry bag closure
- D-ring lashing points: for secure attachment

COLOURS



- Charcoal / Black
code: LU0162-A3CHBK

SIZES: 2L

8L VAPOR CZ LU0164

Light Weight Dry Bag



FEATURES:

- TPU coated 40D Polyester
- Roll down dry bag closure
- D-ring lashing points: for secure attachment
- Purge Valve- feature for easy compression

COLOURS



- Charcoal / Black
code: LU0164-A3CHBK

SIZES: 8L

4L VAPOR CZ LU0163

Light Weight Dry Bag



FEATURES:

- TPU coated 40D Polyester
- Roll down dry bag closure
- D-ring lashing points: for secure attachment

COLOURS



- Charcoal / Black
code: LU0163-A3CHBK

SIZES: 4L

20L VAPOR CZ LU0165

Light Weight Dry Bag



FEATURES:

- TPU coated 40D Polyester
- Roll down dry bag closure
- D-ring lashing points: for secure attachment
- Purge Valve- feature for easy compression

COLOURS



- Charcoal / Black
code: LU0165-A3CHBK

SIZES: 20L

6L DRY BAG LU0116

Heavy Duty Dry Bag

NEW MATERIAL



FEATURES:

- Durable PVC fabric
- Light in weight easy to stow
- Snap Shut dry fastening

COLOURS



Clear
code: LU0116-A8CLEAR

SIZES: 6L

25L DRY BAG LU0118

Heavy Duty Dry Bag

NEW MATERIAL



FEATURES:

- Durable PVC fabric
- Light in weight easy to stow
- Snap Shut dry fastening
- Removable webbing shoulder strap

COLOURS



Black
code: LU0118-A8BKBK

SIZES: 25L

12L DRY BAG LU0117

Heavy Duty Dry Bag

NEW MATERIAL



FEATURES:

- Durable PVC fabric
- Light in weight easy to stow
- Snap Shut dry fastening
- Removable webbing shoulder strap

COLOURS



Black
code: LU0117-A8BKBK

SIZES: 12L

50L DRY BAG LU0119

Heavy Duty Dry Bag

NEW MATERIAL



FEATURES:

- Durable PVC fabric
- Light in weight easy to stow
- Snap Shut dry fastening
- Removable webbing shoulder strap

COLOURS



Black
code: LU0119-A8BKBK

SIZES: 50L

50L DRY BACKPACK LU0120

Heavy Duty Dry Backpack



FEATURES:

- Durable PVC fabric
- Snap shut dry fastening
- Back pack carry straps

COLOURS



● **Black**
code: LU0120-A8BKBK

SIZES: 50L

ARICA LU0127

Bodyboard Bag



FEATURES:

- Adjustable shoulder straps and carrier handle
- Front zip pocket with drainage holes
- Fits two 42" adult sized bodyboards

COLOURS



● **Red / Black**
code: LU0127-A5BKRE

SIZES: ONESIZE

100L DRY BACKPACK LU0122

Heavy Duty Dry Backpack



FEATURES:

- Durable PVC fabric
- Snap shut dry fastening
- Back pack carry straps

COLOURS



● **Black**
code: LU0122-A8BKBK

SIZES: 100L

70L WET & DRY BAG LU0175

Wet & Dry Travel Bag



FEATURES:

- Durable Nylon twill
- 70L
- Scuff & tear resistant
- Rubber reinforced grab handles on each end
- Non-slip padded shoulder strap
- Nylon webbing reinforced carrying straps
- Dual compartments
- Front pocket organiser
- Wet storage section
- Highly durable rubber bottom

COLOURS



● **Grey**
code: LU0175-A7GYGY

SIZES: 70L

A black and white photograph of a sailor on a racing boat, wearing a GUL buoyancy aid, with a red text overlay. The sailor is seen from the side, leaning back as the boat heels. The boat's hull and boom are visible, with 'GUL' and 'SELDEN' logos. The sail has a large number '2' and 'GUL' branding. The background shows another sailboat and a hazy horizon.

BUOYANCY AIDS

Gul Technical Apparel S/S 2016

CODE ZERO / GARDA / PRO RACE / PRO LITE /
IMPACT VEST / REC VEST / DARTMOUTH

CODE ZERO EVO GM0379

Buoyancy Aid



NEW

FEATURES:

- 50N buoyancy
- ISO 12402-5 approved
- Durable Rip-Stop CE approved nylon
- Supersoft, lightweight PVC foam
- Integral webbing reinforcement
- High trapeze cut
- **GRIPEZE**: anti ride elastic grip
- Bonded low profile self-draining pocket
- Elasticated shoulders
- Adjustable side straps
- Adjustable webbing thigh straps (Junior size only)
- YKK side zip

COLOURS



Black
code: GM0379-A9BKBK



Red
code: GM0379-A9RERE



Blue
code: GM0379-A9LBL

SIZES: S/M/L/XL

GARDA 50N GM0002

Adult & Junior Buoyancy Aid



NEW

FEATURES:

- Super soft, lightweight PVC foam
- Integral webbing reinforcement
- 50N buoyancy
- CE EN393 approved
- Durable Rip-Stop CE approved nylon
- High trapeze cut
- Self-draining pocket
- 2-way waist adjustment for personalised fit
- Adjustable webbing thigh straps (Junior size only)

COLOURS



Black
code: GM0002-A9BKBK



Red
code: GM0002-A9RERE



Blue
code: GM0002-A9LBL

SIZES: S/M/L/XL

GARDA 50N GM0162

Adult & Junior Buoyancy Aid



FEATURES:

- Super soft, lightweight PVC foam
- Integral webbing reinforcement
- 50N buoyancy
- CE EN393 approved
- Durable Rip-Stop CE approved nylon
- High trapeze cut
- Self-draining pocket
- 2-way waist adjustment for personalised fit
- Adjustable webbing thigh straps (Junior size only)

COLOURS



- Italian Plum
code: GM0162-A7ITPL
- Black
code: GM0162-A5BKBK

SIZES: S / M / L / XL **JUNIOR SIZES** J (XS)

PRO RACE 50N GM0341

Buoyancy Aid



FEATURES:

- 50N buoyancy
- ISO approved
- Durable Rip-Stop nylon
- Super soft, lightweight PVC foam
- High trapeze cut
- Self-draining zipped pocket
- Neoprene shoulders
- Neoprene side belt system allows personalised adjustment for a secure fit
- Solas approved reflective tape on shoulders

COLOURS



- Charcoal / Silver
code: GM0341-A3CHSI
- Italian Plum / Turquoise
code: GM0341-A7PLTU

SIZES: S / M / L / XL

RACE LITE GM0342

Adult & Junior Buoyancy Aid



FEATURES:

- Durable Rip-Stop nylon
- Layered PE foam
- 50N buoyancy
- ISO approved
- Race fit-narrow with a high cut
- Adjustable low profile shoulders
- Front belt system allows personalised adjustment
- YKK front zip
- Solas approved reflective tape on shoulders
- Extra reflective piping for visibility

COLOURS



- Black / Grey
code: GM0342-A7BKGY

SIZES: S-M / L-XL **JUNIOR SIZES** J

IMPACT VEST SK7102

Adult & Junior Ski Vest



FEATURES:

- Durable rip-stop CE approved nylon
- CE approved layered PE foam
- 50N buoyancy
- CE EN393 approved
- 4 adjustable, durable webbing straps
- Adjustable webbing thigh straps (Junior size only)
- Highly durable seams

COLOURS



- Black/Red
code: SK7102-A5BKRE

SIZES: S / M / L / XL **JUNIOR SIZES** J (XS)

REC VEST GK0007

Adult & Junior Rec Vest




FEATURES:

- Durable rip-stop CE approved nylon
- Super soft, lightweight PVC foam
- 50N buoyancy
- CE EN393 approved
- Self-draining key pocket
- Fully adjustable webbed belt
- YKK Front zip
- Elasticated snug fit waist

COLOURS



 **Black / Red**
code: GK0007-A3BKRE



 **Black / Silver**
code: GK0007-A5BKSI

SIZES: S-M / L-XL **JUNIOR SIZES** J

DARTMOUTH GM0346

Childs Life Jacket




FEATURES:

- CE approved hard wearing outer
- 40mm Nylon webbing waist belt
- 100N buoyancy
- ISO approved life jacket
- Solas approved reflective tape on collar
- Adjustable webbing thigh straps
- Soft layered foam
- YKK front Zip

COLOURS



 **Charcoal / Orange**
code: GM0346-A3ORCH

SIZES: BABY / TODDLER / CHILD / JUNIOR

KAYAK

Gul Technical Apparel S/S 2016

CAG / SPRAYDECK / HELMETS / GLOVES



TAW GK0151

Taw Touring Dry Gag



FEATURES:

- GCX4: Breathable, waterproof, hard wearing 4 layer fabric
- 100% waterproof seams
- Adjustable outer waist
- YKK W/R Bonded zipped pockets
- GLIDESKIN: neck seals
- Zip up stow-away light weight fully adjustable 2 layer hood
- Action fit- pre bent elbows
- Easy-grab hook and loop cuff adjuster
- Neoprene waistband -twin waist

COLOURS



Red / Grey
code: GK0151-A7REGY

SIZES: S / M / L / XL / XXL

SHORE GK0141

Fabric Paddle Mitt



FEATURES:

- GCX: Waterproof, windproof fabric
- 100% waterproof taped seams
- EVOTHERM: fleece core insulation lining
- Bungee cord adjustable wrists
- 3m reflective piping

COLOURS



Grey / Red
code: GK0141-A6GYRE

SIZES: ONE SIZE

SCAPA GK0014

Neoprene Paddle Mitt



FEATURES:

- BLINDSTITCHED: Seam construction
- X-FLEX: for complete flexibility
- THERMOSPAN: thermal insulation
- TITANIUM 2: lining reflects the heat back in
- Wide cuff opening with cuff pull tab, secure Velcro closure

COLOURS



Black / Red
code: GK0014-A6BKRE

SIZES: ONE SIZE

EVO 2 HELMET AC0103

Pro Helmet


FEATURES:

- ABS T-shock
- EVA Impact
- Acculock
- EN approved



COLOURS



 **Black / Yellow**
code: AC0103-A7BKYE

SIZES: S-M / L **JUNIOR SIZES** J

EVO HELMET AC0104

Centre Helmet


FEATURES:


- ABS protection
- EVA impact protection
- Acculock
- Ear Protection
- EN approved



COLOURS



 **Yellow**
code: AC0104-A7YEYE

 **Red**
code: AC0104-A7RERE

SIZES: S-M / L **JUNIOR SIZES** J

SHORE GK0152

Nylon Universal Spraydeck


FEATURES:

- GCX: Waterproof, wind-proof fabric
- 100% waterproof taped seams
- Adjustable deck & waist cord
- 25mm webbing release handle
- Universal fit



COLOURS



 **Grey / Red**
code: GK0152-A7GYRE

SIZES: One Size





SNORKEL & FINS

Gul Technical Apparel S/S 2016

TARPON / MASK & SNORKEL

MASK & SNORKEL GD0001

Adult Mask & Snorkel

MASK & SNORKEL GD0002

Junior Mask & Snorkel

GUL PERFORMANCE APPAREL SPRING / SUMMER 2016



FEATURES:

- Quick adjusting buckles
- Tempered glass lenses
- Large field of vision
- Adjustable silicon strap
- Silicone facial skirt
- CE Approved
- Snorkel keeper
- Splash-guard
- Silicon mouthpiece
- Purge valve

COLOURS



Yellow / Black
code: GD0001-A5YEBK



FEATURES:

- Quick adjusting buckles
- Tempered glass lenses
- Large field of vision
- Adjustable strap
- Facial skirt
- CE Approved
- Snorkel keeper
- Splash-guard
- Silicon mouthpiece
- Purge valve

COLOURS



Blue / Black
code: GD0002-A5BLBK

SIZES: ONE SIZE

SIZES: ONE SIZE

TARPON GD0003

Adult Mask, Snorkel & Fin Set



FEATURES:

- Mask
- Quick adjusting buckles
- Tempered glass lenses, large field of vision
- Adjustable silicon strap
- Silicone facial skirt
- Snorkel
- Snorkel keeper
- Splash-guard
- Silicon mouthpiece
- Purge valve
- Fins
- Efficient stream line design
- Lightweight full foot fin, ideal for swimming and snorkelling.
- Soft and comfortable open-toe foot pocket,
- No need for booties.

COLOURS



Yellow / Black
code: GD0003-A5YEBK

SIZES: XS / S / M / L / XL

TARPON GD0004

Junior Mask, Snorkel & Fin Set



FEATURES:

- Mask
- Quick adjusting buckles
- Tempered glass lenses
- Large field of vision
- Adjustable PVC strap
- PVC facial skirt
- Snorkel
- Snorkel keeper
- Splash-guard
- Silicon mouthpiece
- Purge valve
- Fins
- Efficient stream line design
- Lightweight fin, ideal for swimming and snorkelling.
- Adjustable PVC foot strap
- Soft and comfortable open-toe foot pocket

COLOURS



Blue / Black
code: GD0004-A5BLBK

SIZES: S-M / L-XL



SUNGLASSES

Gul Technical Apparel S/S 2016

PRO / RACE / REACT / CHIX

PRO SG0001

Code Zero Floating Sunglasses



FEATURES:

- Floating 100% glare-free polarized lenses
- Frames grilamid TR90: light, tough and flexible
- Wrap around styling for maximum protection
- Excellent UV protection
- **Supplied with:**
Hard Travel Case
Microfibre bag
Retainer for secure fit

COLOURS



Black / Red
code: SG0001-A3BKRE



White / Black
code: SG0001-A3WHBK



Navy / Grey
code: SG0001-A3NAGY



Tortoiseshell / Brown
code: SG0001-A3TOBR

RACE SG0002

Code Zero Floating Sunglasses



FEATURES:

- Floating 100% glare-free polarized lenses
- Frames grilamid TR90: light, tough and flexible
- Wrap around styling for maximum protection
- Excellent UV protection
- **Supplied with:**
Hard Travel Case
Microfibre bag
Retainer for secure fit

COLOURS



Red / Black
code: SG0002-A3REBK



Black / Red
code: SG0002-A3BKRE



Navy / Grey
code: SG0002-A3NAGY

REACT SG0003

Code Zero Floating Sunglasses



FEATURES:

- Floating 100% glare-free polarized lenses
- Frames grilamid TR90: light, tough and flexible
- Wrap around styling for maximum protection
- 3M reflective detail on temple
- Excellent UV protection
- **Supplied with:**
 - Hard Travel Case
 - Microfibre bag
 - Retainer for secure fit

COLOURS



Tortoiseshell / Brown
code: SG0003-A3TOBR



Navy / Grey
code: SG0003-A3NAGY



Red / Black
code: SG0003-A3REBK

SIZES: ONE SIZE

CHIX SG0004

Code Zero Floating Sunglasses



FEATURES:

- Floating 100% glare-free polarized lenses
- Frames grilamid TR90: light, tough and flexible
- Wrap around styling for maximum protection
- Excellent UV protection
- **Supplied with:**
 - Hard Travel Case
 - Microfibre bag,
 - Retainer for secure fit

COLOURS



Tortoiseshell / Brown
code: SG0004-A3TOBR



Black / Red
code: SG0004-A3BKRE

SIZES: ONE SIZE



TO THE BEACH

G-FORCE

Gul Technical Apparel S/S 2016

MENS / LADIES / JUNIOR / WETSUITS & SHORTIES

G-FORCE GF1305

3mm Flatlock Wetsuit



NEW FEATURES

FEATURES:

- 80% D-Flex panels for durability
- 20% X-FLEX: 150% super-stretch sleeves
- Flatlock durable seam construction
- Velcro adjustable neck
- Smooth-Skin chest and back
- TITANIUM 2: reflects the heat back in
- Powertex knees for flexibility and durability

COLOURS



Black / Navy
code: GF1305-A9BKNA

SIZES: S / MS / MST / M / MT / ML / L / XL / XXL

G-FORCE GF1306

3mm Ladies Flatlock Wetsuit



NEW FEATURES

FEATURES:

- 80% D-Flex panels for durability
- 20% X-FLEX: 150% super-stretch sleeves
- Flatlock durable seam construction
- Velcro adjustable neck
- Smooth-Skin chest and back
- TITANIUM 2: reflects the heat back in
- Powertex knees for flexibility and durability

COLOURS



Black / Mullberry
code: GF1306-A9BKMU

SIZES: 8 / 10 / 12 / 12-14 / 14 / 16 / 18

G-FORCE GF1307

3mm Junior Flatlock Wetsuit



NEW FEATURES

FEATURES:

- 80% D-Flex panels for durability
- 20% X-FLEX: 150% super-stretch sleeves
- Flatlock durable seam construction
- Velcro adjustable neck
- Smooth-Skin chest and back
- TITANIUM 2: reflects the heat back in
- Powertex knees for flexibility and durability

COLOURS



Black / Zafer
code: GF1307-A9BKZA

JUNIOR SIZES

T2 / T3 / JXXXS / JXXS / JXS / JS / JM / JL / JXL

G-FORCE GF1308

3mm Junior Girls Flatlock Wetsuit



NEW FEATURES

FEATURES:

- 80% D-Flex panels for durability
- 20% X-FLEX: 150% super-stretch sleeves
- Flatlock durable seam construction
- Velcro adjustable neck
- Smooth-Skin chest and back
- TITANIUM 2: reflects the heat back in
- Powertex knees for flexibility and durability

COLOURS



Black / Pink
code: GF1308-A9BKPI

JUNIOR SIZES

T2 / T3 / JXXXS / JXXS / JXS / JS / JM / JL / JXL

G-FORCE GF3305

3mm Flatlock Shorti



NEW FEATURES

FEATURES:

- 80% D-Flex panels for durability
- 20% X-FLEX: 150% super-stretch sleeves
- Flatlock durable seam construction
- Velcro adjustable neck
- Smooth-Skin chest and back
- TITANIUM 2: reflects the heat back in

COLOURS



Black / Navy
code: GF3305-A9BKNA

SIZES: S / MS / M / ML / L / XL / XXL

G-FORCE GF3306

3mm Ladies Flatlock Shorti



NEW FEATURES

FEATURES:

- 80% D-Flex panels for durability
- 20% X-FLEX: 150% super-stretch sleeves
- Flatlock durable seam construction
- Velcro adjustable neck
- Smooth-Skin chest and back
- TITANIUM 2: reflects the heat back in

COLOURS



Black / Mulberry
code: GF3306-A9BKMU

SIZES: 8 / 10 / 12 / 12-14 / 14 / 16 / 18

G-FORCE GF3307

3mm Junior Flatlock Shorti



NEW FEATURES

FEATURES:

- 80% D-Flex panels for durability
- 20% X-FLEX: 150% super-stretch sleeves
- Flatlock durable seam construction
- Velcro adjustable neck
- Smooth-Skin chest and back
- TITANIUM 2: reflects the heat back in
- Powertex knees for flexibility and durability

COLOURS



Black / Zafer
code: GF3307-A9BKZA

JUNIOR SIZES T2 / T3 / JXXXS / JXXS / JXS / JS / JM / JL / JXL

G-FORCE GF3308

3mm Junior Flatlock Shorti



NEW FEATURES

FEATURES:

- 80% D-Flex panels for durability
- 20% X-FLEX: 150% super-stretch sleeves
- Flatlock durable seam construction
- Velcro adjustable neck
- Smooth-Skin chest and back
- TITANIUM 2: reflects the heat back in
- Powertex knees for flexibility and durability

COLOURS



Black / Pink
code: GF3308-A9BKPI

JUNIOR SIZES T2 / T3 / JXXXS / JXXS / JXS / JS / JM / JL / JXL



BODYBOARDS

Gul Technical Apparel S/S 2016

VIPER / FLEXOR / RESPONSE / RESPONSE KIDS /
SEASPRAY

VIPER GB0020

42" Pro Bodyboard



NEW FEATURES

FEATURES:

- PP Core
- 60:40 Rails
- Stringer
- Bat Tail
- Surlyn Slick
- 3D Channels
- Coil Leash & Plug
- PE Deck
- 42" Board



COLOURS



Silver
code: GB0020-A9SISI

FLEXOR III GB0019

42" Adult Bodyboard



NEW

FEATURES:

- EPO Core
- 60:40 Rails
- Bat Tail
- Surlyn Bottom with Channels
- Coil Leash & Plug
- 42" Board
- Non X-Link Deck



COLOURS



Black
code: GB0019-A9BKBK



Navy
code: GB0019-A9NANA

RESPONSE GB0018

42" Adult Bodyboard



NEW COLOURS

FEATURES:

- EPO Core
- 60:40 Rails
- Crescent Tail
- Slick Bottom
- Leash & Plug
- 42" Board

COLOURS



● **Light Blue**
code: GB0018-A9LBLB



● **Red**
code: GB0018-A9RERE



● **Blue**
code: GB0018-A9LBLB

RESPONSE GB0022

36" Junior Bodyboard

NEW COLOURS

FEATURES:

- EPO Core
- 50:50 Rails
- Crescent Tail
- Slick Bottom
- Leash & Plug
- X-Link Deck
- 36" Board



COLOURS



● **Light Blue**
code: GB0022-A9LBLB



● **Red**
code: GB0022-A9RERE



● **Yellow**
code: GB0022-A9YEYE

SEASPRAY GB0024

33" Junior Bodyboard

NEW

FEATURES:

- EPO Core
- 60:40 Rails
- Slick Bottom
- Leash & Plug
- XPE Deck
- 33" Board



COLOURS



● **Pink**
code: GB0024-A9PIPI



● **Red**
code: GB0024-A9RERE



● **Grey**
code: GB0024-A9GYGY



SURFBOARDS

Gul Technical Apparel S/S 2016

LONGBOARD / MINI MAL / GOLDEN NUGGET /
MOD FISH /

FIVE PIN CB0027

Cross Pintail Longboard



FEATURES:

- The Five Pintail is an ultra modern longboard
- Designed for all-round surfing.
- Fin set up 4 plus one fin box
- Leash plug
- Supplied with a set of side fins & Longboard fin
- Bottom concave to double concave, full rail Pintail
- Finish matt (non polished)

SIZES:

Length	Width	Thickness
9'0	22 1/2"	3"
9'2	22 3/4"	3"
9'6	22 3/4"	3"

COLOURS



White
code: CB0027-A5WHWH



SIZES: 9'0 / 9'2 / 9'6

MAL MAL CB0026

Cross Mini Mal Surfboard



FEATURES:

- The Mini Mal Mal takes all the attributes of a Minimal; width, thickness, rail profile, foil and maximises them.
- Resulting in the perfect board for the novice surfer
- Fin set up 2 plus one fin box
- Leash plug
- Supplied with a set of side fins & Longboard fin
- Bottom concave to double concave, full rail
- Tail square
- Finish matt (non polished)

SIZES:

Length	Width	Thickness
7'6	22"	2 7/8"
7'10	22 3/4"	3"
8'2	23"	3 1/8"

COLOURS



White
code: CB0026-A5WHWH



SIZES: 7'6 / 7'10 / 8'2

GOLDEN NUGGET CB0025

Cross Surfboard



FEATURES:

- Features low rockered, high volume aspects of a fish, this board has stability and great paddle strength
- Fin set up 3/4 plus one fin box
- Leash plug
- Supplied with a set of side fins & Longboard fin
- Bottom concave to V tail
- Tail round
- Finish matt (non polished)

SIZES:

Length	Width	Thickness
6'10"	22 6/8"	2 5/8"
7'0"	22 6/8"	2 5/8"
7'2"	22 6/8"	2 5/8"
7'4"	22 6/8"	2 5/8"

COLOURS



White
code: CB0025-A5WHWH

SIZES: 6'10 / 7'0 / 7'2 / 7'4



MOD FISH CB0024

Cross Fish Surfboard



FEATURES:

- Classic fish shape, with a widened tail block with the effect of straightening the rail line and increasing the tail area
- Fin set up 3/4 combi
- Leash plug
- Thruster fins included
- Bottom concave to double concave
- Tail Swallow
- Finish matt (non polished)

SIZES:

Length	Width	Thickness
5'10	20"	2 1/2"
6'3	20 1/2"	2 1/2"
6'8	21"	2 3/4"
7'2	22"	3"
7'10	22 1/2"	3 1/2"

COLOURS



White
code: CB0024-A5WHWH

SIZES: 5'10 / 6'3 / 6'8 / 7'2 / 7'10



POS

Point of Sale

Gul continues to support the retailer in point of sale by providing a selection of marketing goods, including stands, stickers, mugs, flags and printed POS. Helping you drive brand awareness of Gul Performance Apparel to the consumer. For any POS items, please contact your area sales manager.

GUL SUNGLASSES STAND



- Gul acrylic and metal sunglass counter display with lockable features.
Holds 12 sunglasses
Height 71CM
Base diameter 74cm

GUL RASHGUARD HANGER



- Gul recycled cardboard rashguard hanger

GUL LOGO STICKERS



- Gul Logo Transparent Vinyl Sticker
32mm x 200mm



- Gul Logo Decal Board Vinyl Sticker
110mm x 250mm



- Gul Logo Decal Board Vinyl Sticker
80mm x 500mm



SIZE GUIDES

Gul Technical Apparel S/S 2016

FITTING GUIDE / WETSUIT SIZING / DRY SUIT SIZING / MARINE
SIZING / RASHGUARD SIZING / BUOYANCY AID SIZING /
ACCESSORY SIZING

WETSUIT FITTING GUIDE

Size Chart & Fitting:

THE GUL FIT:

Gul continues to develop the fit and sizing of our wetsuits. One of the most important factors when buying technical apparel is the fit. If the garment doesn't fit correctly, if it isn't comfortable it won't perform to its' designed capability. When it comes to wetsuits if the suit fits too loose, there will be cold water entering and you'll never stay warm. A suit which is too small or large can also cause a rash. Guls' 45+ years of wetsuit design and engineering helps ensure an excellent fit.

HOW A WETSUIT WORKS:

A wetsuit creates a barrier against nature's extreme elements by utilising the insulating properties of closed cell neoprene. Neoprene is a closed cell foam made up from thousands of tiny air bubbles known as cells. The air within these tiny cells creates a barrier which slows down the conduction of heat and allows your body heat to be retained.

NEOPRENE:

Guls' focus is to use the world's best neoprene and fabric innovations available. All materials used in the range are manufactured to Guls' specifications in order to have the right combination of warmth, strength, flexibility and durability. Gul has its own QC inspectors at the factory source who remove and reject any neoprene which comes below Guls' superior standards.

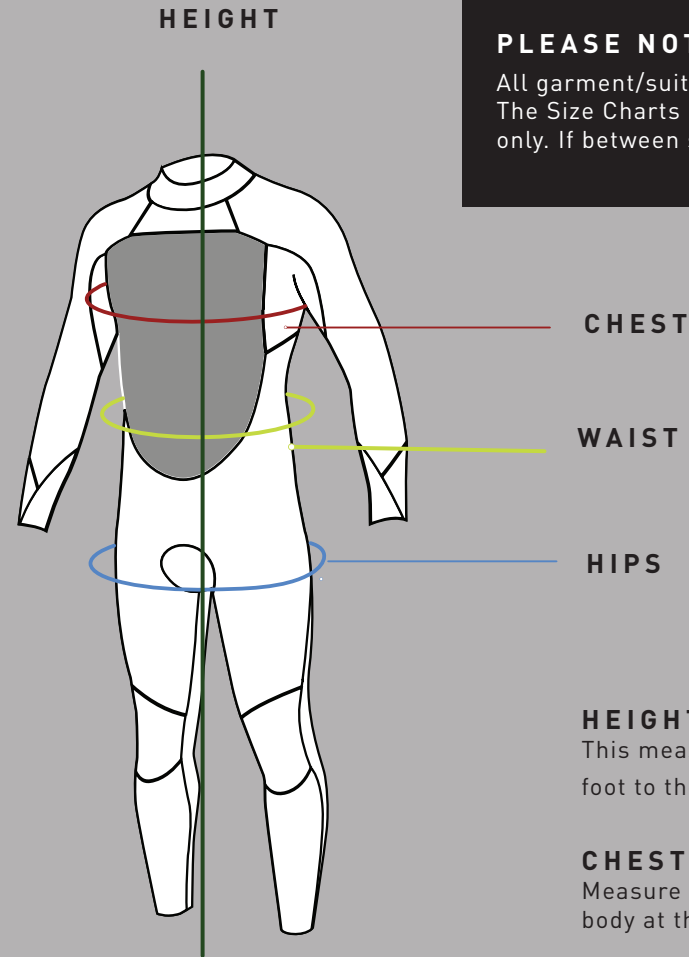
NEOPRENE THICKNESS:

The thickness of the neoprene utilised in a wetsuit determines the warmth and flexibility. A thick wetsuit provides maximum insulation but can inhibit the flexibility. A thin wetsuit will be very flexible but can affect the thermal insulation properties. The key is to get the right combination of warmth and flexibility so that you stay warm, but also provides maximum flexibility.

WETSUIT MEASUREMENTS

PLEASE NOTE:

All garment/suits not offered in all sizes. The Size Charts are for general guidelines only. If between sizes, always go up a size!



CHEST

WAIST

HIPS

HEIGHT: _____
This measurement is from the bottom of your foot to the top of your head

CHEST: _____
Measure under the arms all the way round the body at the fullest part of your chest

WAIST: _____
Measure around your waistline

HIPS: _____
Measure around the widest part of the hips

WETSUIT SIZE CHARTS

Mens, Ladies & Junior Sizes

MENS WETSUITS

Size	S	MS	MST	M	MT	ML	LS	L	LT	XL	XLT	XXL	XXLT
Height	5'4" - 5'6" (162 - 167cm)	5'6" - 5'8" (167 - 172cm)	5'10" - 6' (177 - 182)	5'8" - 5'10" (172 - 177cm)	5'10" - 6' (177 - 182cm)	5'10" - 6' (177 - 182cm)	5'8" - 5'10" (172 - 177cm)	5'10" - 6' (177 - 182cm)	6' - 6'2" (182 - 188cm)	5'11" - 6'1" (180 - 185cm)	6'1" - 6'3" (185 - 190cm)	6'0" - 6'2" (183 - 188cm)	6'3" - 6'5" (190 - 195cm)
Waist	27" - 29" (69 - 74cm)	29" - 31" (74 - 79cm)	29" - 31" (74 - 79cm)	31" - 33" (79 - 84cm)	31" - 33" (79 - 84cm)	33" - 35" (84 - 89cm)	35" - 37" (89 - 94cm)	35" - 37" (80 - 94cm)	35" - 37" (80 - 94cm)	37" - 39" (94 - 99cm)	37" - 39" (94 - 99cm)	39" - 40" (99 - 102cm)	39" - 40" (99 - 102cm)
Chest	34" - 36" (86 - 91cm)	36" - 38" (91cm - 97cm)	36" - 38" (91 - 97cm)	38" - 40" (97 - 102cm)	38" - 40" (97 - 102cm)	40" - 42" (102 - 107cm)	42" - 44" (107cm - 112cm)	42" - 44" (107 - 112cm)	42" - 44" (107 - 112cm)	44" - 46" (112 - 117cm)	44" - 46" (112 - 117cm)	46" - 48" (117 - 122cm)	46" - 48" (117 - 122cm)
Hips	32" - 34" (81 - 86cm)	32" - 34" (81 - 86cm)	32" - 34" (81 - 86cm)	36" - 38" (91 - 97cm)	36" - 38" (91 - 97cm)	38" - 40" (97 - 102cm)	40" - 42" (102 - 107cm)	40" - 42" (102 - 112cm)	40" - 42" (102 - 107cm)	42" - 44" (107 - 112cm)	42" - 44" (107 - 112cm)	44" - 46" (112 - 117cm)	44" - 46" (112 - 117cm)

LADIES WETSUITS

UK	6	8	10	10T	12	12T	12/14	14	16	18	20	22
USA	2	4	6	6T	8	8T	8/10	10	12	14	16	18
Euro1	34	36	38	38T	40	40T	40/42	42	42	46	48	50
Euro2	32	34	36	36T	38T	38T	38/40	40	42	44	46	48
ITA	36	38	40	40T	42	42T	42/44	44	46	48	50	52
Height	5'3" - 5'4" (155 - 160cm)	5'4" - 5'5" (160 - 165cm)	5'5" - 5'6" (165 - 167cm)	5'6" - 5'7" (167 - 170cm)	5'6" - 5'7" (167 - 170cm)	5'7" - 5'8" (170 - 173cm)	5'6" - 5'7" (167 - 170cm)	5'7" - 5'8" (170 - 173cm)	5'8" - 5'9" (173 - 176cm)	5'8.5" - 5'9.5" (174 - 177cm)	5'9" - 5'10" (175 - 177cm)	5'10" - 5'11" (177 - 180cm)
Waist	20" - 22" (51 - 56cm)	22" - 24" (56 - 61cm)	24" - 26" (61 - 66cm)	24" - 26" (61 - 66cm)	26" - 28" (66 - 71cm)	26" - 28" (66 - 71cm)	26" - 28" (66 - 71cm)	28" - 30" (71 - 76cm)	30" - 32" (76cm - 81cm)	32" - 34" (81cm - 86cm)	34" - 36" (86cm - 91cm)	36" - 38" (91cm - 97cm)
Chest	28" - 30" (71 - 76cm)	30" - 32" (76 - 81cm)	32" - 34" (81 - 86cm)	32" - 34" (81 - 86cm)	34" - 36" (86 - 91cm)	34" - 36" (86 - 91cm)	34" - 36" (86 - 91cm)	36" - 38" (91 - 97cm)	38" - 40" (97 - 102cm)	40" - 42" (102 - 107cm)	42" - 44" (107 - 112cm)	44" - 46" (112 - 117cm)
Hips	30" - 32" (76 - 81cm)	32" - 34" (81 - 86cm)	34" - 36" (86 - 91cm)	34" - 36" (86 - 91cm)	36" - 38" (91 - 97cm)	36" - 38" (91 - 97cm)	38" - 40" (97 - 102cm)	38" - 40" (97 - 102cm)	40" - 42" (102 - 107cm)	40" - 42" (102 - 107cm)	42" - 44" (107 - 112cm)	44" - 46" (112 - 117cm)

JUNIOR WETSUITS

Size	T2	T3	JXXXS	JXXS	JXS	JS	JM	JL	JXL
Age	2-3	3-4	4-5	5-6	7-8	9-10	11-12	13-14	14+
Height	3'3" (99cm)	3'5" (104cm)	3'10" (116cm)	4'1" (124cm)	4'4" (132cm)	4'7" (140cm)	4'10" (146cm)	5'1" (154cm)	5'4" (162cm)
Waist	19" (48cm)	20" (51cm)	20" (51cm)	21" (53cm)	22" (56cm)	23" (58cm)	24" (61cm)	26" (66cm)	28" (71cm)
Chest	20" (51cm)	21" (53cm)	23" (58cm)	24" (61cm)	26" (66cm)	28" (71cm)	29" (74cm)	31" (79cm)	33" (84cm)
Hips	21" (53cm)	22" (56cm)	22" (56cm)	23" (58cm)	24" (61cm)	26" (66cm)	28" (71cm)	29" (74cm)	31" (79cm)

Euro 1: France, Spain, Belgium, Portugal
 Euro 2: Sweden, Denmark, Austria, Netherlands, Czech Republic

The Size Chart are for general guidelines only, if in between sizes... Always go up!

DRYSUIT SIZE CHARTS

Mens, Ladies & Junior Sizes

MENS DRYSUITS

Size	S	M	MB	L	XL	XXL
Height	5'5" - 5'8" (165 - 172.5 cm)	5'7" - 5'11" (170-180 cm)	5'7" - 5'11" (170-180 cm)	5'10" - 6'2" (178-188 cm)	6'1" - 6'4" (185.5 -193 cm)	6'3" - 6'5" (190 -195.5 cm)
Waist	28" - 30" (71 -76 cm)	32" - 34" (81 - 86 cm)	36" - 38" (91.5 - 96.5cm)	34" - 36" (86 - 91.5 cm)	36" - 38" (91.5 - 96.5 cm)	38" - 40" (96 -101.5 cm)
Chest	35" - 38" (89 - 96.5 cm)	38" - 41" (96 - 104 cm)	44" - 47" (112 - 119 cm)	41" - 44" (104 - 112 cm)	44" - 47" (112 -119 cm)	47" - 50" (119 - 127 cm)

LADIES DRYSUITS

Size	S	M	L
UK	8-10	12-14	16-18
USA	4-6	8-10	12-14
Euro1	36-38	40-42	42-44
Euro2	34-36	38-40	42-44
ITA	38-40	42-44	46-48
Height	5'1" -5'7" (155-170cm)	5'6" - 5'11" (167.5-180cm)	5'8" - 6' (172.5-183 cm)
Waist	24"-28" (61-71cm)	28"-32" (71cm-81cm)	32"-36" (81-91cm)
Chest	32"- 36" (81-91 cm)	36"-40" (91-102cm)	40"-44" (102-112cm)

Euro 1: France Spain, Belgium, Portugal

Euro 2: Sweden, Denmark, Austria, Netherlands, Czech Republic

DRY SOCKS

Size	J	S-M	L-XL
UK	1 - 4.5	5 - 8.5	9 - 12
Euro	33.5 - 37.5	38 - 42.5	43 - 46

JUNIOR DRYSUITS

Size	JS	JM	JL
Height	4'5" - 4'10" (134 - 147cm)	4'9" - 5'2" (145 - 157cm)	5'1" - 5'6" (155 - 167cm)
Chest	26" - 28" (66 - 71cm)	28" - 30" (71 - 76cm)	30" - 32" (76 - 81cm)
Waist	22'5" - 24'5" (57.5 - 62.5cm)	24.5" - 26.5" (62.5 - 67.5cm)	26.5" - 28.5" (67.5 - 70cm)

MARINE SIZE CHARTS

Jackets, Hikepants, Harness

MENS JACKETS

Size	XS	S	M	L	XL	XXL
Waist	28" - 30" (71 - 76 cm)	28" - 30" (71 - 76 cm)	32" - 34" (81 - 86 cm)	34" - 36" (86 - 91.5 cm)	36" - 38" (91.5 - 96.5 cm)	38" - 40" (96 - 101.5 cm)
Chest	32" - 35" (81 - 89 cm)	35" - 38" (89 - 96.5 cm)	38" - 41" (96 - 104 cm)	41" - 44" (104 - 112 cm)	44" - 47" (112 - 119 cm)	47" - 50" (119 - 127 cm)

LADIES JACKET

Size	8	10	12	14	16	18
Euro1	36	38	40	42	44	46
Euro2	34	36	38	40	42	44
USA	4	6	8	10	12	14

HIKEPANTS

Size	S	M	L	XL	XXL	XXXL
Height	5'6" - 5'8" (167 - 172 cm)	5'8" - 5'10" (172 - 177 cm)	5'10" - 6" (177 - 182 cm)	5'11" - 6'1" (180-185 cm)	6' - 6'2 (182 - 187 cm)	6'2" - 6'3' (188 - 191 cm)
Chest	36" - 38" (91 - 97 cm)	38" - 40" (97 - 102 cm)	41" - 43" (104 - 109 cm)	44" - 46" (112 - 117 cm)	47" - 49" (120 - 125 cm)	50" - 52" (127 - 132 cm)
Waist	29" - 31" (74 - 79 cm)	31" - 33" (79 - 84 cm)	35" - 37" (89 - 94 cm)	37" - 39" (94 - 99 cm)	39" - 40" (99 - 102 cm)	40" - 41" (102 - 104 cm)
Hips	34" - 36" (86 - 91 cm)	36" - 38" (91 - 97 cm)	40" - 42" (102 - 107 cm)	42" - 44" (107 - 112 cm)	44" - 46" (112 - 117 cm)	46" - 48" (117 - 122 cm)

HARNESS

Size	JL	S-M	L-XL	XXL
Height	5'2" - 5'6" (158 - 167.5CM)	5'5" - 5'11" (165 - 180CM)	5'10" - 6'4" (178 - 193CM)	6'1" - 6'5" (185.5-195.5 CM)
Waist	27"-30" (69-30 cm)	30"-34" (76-86 cm)	34"-38" (86-96.5cm)	38"-40" (96.5-101.5 cm)

JUNIOR HIKEPANTS

Size	JS (9-10)	JM (11-12)	JL (13-14)
Height	4'7" - 4'10" (140 - 146 cm)	4'10" - 5'1" (146 - 154 cm)	5'1" - 5'4" (154 - 162 cm)
Chest	28" - 30" (71 - 76 cm)	29" - 31" (74 - 79 cm)	31" - 33" (79 - 84 cm)
Waist	23" - 25" (58 - 64 cm)	24" - 26" (61 - 66 cm)	26" - 28" (66 - 71 cm)
Hips	26" - 28" (66 - 71 cm)	28" - 30" (71 - 76 cm)	29" - 31" (74 - 79 cm)

MARINE SIZE CHARTS

Crew Kit

CREW KIT MENS

Size	S	M	L	XL	XXL
Waist	30" (76 cm)	32" (81 cm)	34" (86 cm)	36" (91.5 cm)	38" (96.5 cm)
Chest	35" - 38" (89 - 96.5 cm)	38" - 41" (96 - 104 cm)	41" - 44" (104 - 112 cm)	44" - 47" (112 - 119 cm)	47" - 50" (119 - 127 cm)

CREW KIT LADIES

Size	8	10	12	14	16
USA	4	6	8	10	12
Euro1	36	38	40	42	44
Euro2	34	36	38	40	42
Italy	38	40	42	44	46
Waist	24" - 26" (61 - 66 cm)	26" - 28" (66 - 71 cm)	28" - 30" (71 - 76 cm)	30" - 32" (76 - 81 cm)	32" - 34" (81 - 86 cm)
Chest	32" - 34" (81 - 86 cm)	34" - 36" (86 - 91 cm)	36" - 38" (91 - 96 cm)	38" - 40" (96 - 101.5 cm)	40" - 42" (101.5 - 106.5 cm)

RASHGUARD SIZE CHARTS

Mens, Ladies & Junior Sizes

MENS RASHGUARD

Size	S	M	L	XL	XXL
Chest	34" - 36"	36" - 38"	38" - 40"	38" - 40"	42" - 44"

MENS LEGGINGS

Size	S	M	L	XL	XXL
Waist	30" - 32"	32" - 34"	34" - 36"	36" - 38"	38" - 40"

LADIES RASHGUARD

Size	8	10	12	14	16	18
Euro1	36	38	40	42	44	46
Euro2	34	36	38	40	42	44
USA	4	6	8	10	12	14

JUNIOR RASHGUARD

Size	JS	JM	JL	JXL
Age	5-6	7-8	9-10	11-12
Chest	24" (61 cm)	26" (66 cm)	28" (71 cm)	30" (76 cm)

BUOYANCY AID*Garda, Pro Race, Racelite, Dartmouth, Impact Vest, Rec Vest***GARDA 50N (GM0002/ GM0162)**

Size	XS (J)	S	M	L	XL
Weight (KG)	30-40	40-60	60-70	70+	70+
Chest (CM)	76-86	86-96	96-106	106-116	116-127
Buoyancy (N)	50	50	50	50	50

PRO RACE (GM0341)

Size	S	M	L	XL
Weight (KG)	40-60	60-70	70+	70+
Chest (CM)	86-96	96-106	106-116	116-127
Buoyancy (N)	40	45	50	50

RACELITE 50N (GM0342)

Size	J	S-M	L-XL
Weight (KG)	30-40	40-70	70+
Chest (CM)	66-86	86-106	106-127
Buoyancy (N)	35	45	50

DARTMOUTH 100N (GM0346)

Size	BABY	TODDLER	CHILD	JUNIOR
Weight (KG)	10-15	15-20	20-30	30-40
Chest (CM)	-57	57-65	65-70	65-77
Buoyancy (N)	30	30	40	50

IMPACT VEST 50N (SK7102)

Size	XS (J)	S	M	L	XL
Weight (KG)	30-40	40-60	60-70	70	70+
Chest (CM)	76-86	86-96	96-106	106-116	116-127
Buoyancy (N)	35	40	40	45	50

REC VEST (GK0007)

Size	J	S-M	L-XL
Weight (KG)	30-40	40-70	70+
Chest (CM)	76-86	86-106	106-127
Buoyancy (N)	35	45	50

ACCESSORIES*Footwear & Socks***FOOTWEAR ADULT & JUNIOR**

UK	J1	J2	J3	4	5	6	7	8	9	10	11	12	13
EU	34	35	36	37	38	39.5	40.5	42	43	44.5	46	47	48

JUNIOR FOOTWEAR

SIZE	JS	JM	JL	JXL	JXXL
UK	9-10	10-11	12-13	1-2	3-4
Length	16.5cm	18cm	20cm	21.5cm	23cm

JUNIOR AQUASHOE

UK	J6	J7	J8	J9	J10	J11	J12	J13	J1	J2	J3	J4	J5
EU	23	24	25.5	26.5	28	29	30.5	32	34	35	36	37	38

ACCESSORIES

Footwear & Socks

FOOTWEAR ADULT & JUNIOR

UK	J1	J2	J3	4	5	6	7	8	9	10	11	12	13
EU	34	35	36	37	38	39.5	40.5	42	43	44.5	46	47	48

JUNIOR FOOTWEAR

SIZE	JS	JM	JL	JXL	JXXL
UK	9-10	10-11	12-13	1-2	3-4
Length	16.5cm	18cm	20cm	21.5cm	23cm

JUNIOR AQUASHOE

UK	J6	J7	J8	J9	J10	J11	J12	J13	J1	J2	J3	J4	J5
EU	23	24	25.5	26.5	28	29	30.5	32	34	35	36	37	38

SOCKS

Size	S	M	L	XL
UK	6/7	7/8	8/9	9/10
European	39-40	40-42	42-43	43-44.5

ACCESSORIES

Hoods, Helmets & Gloves

HOODS

Size	XS	S	M	L
CM	54 - 55 cm	55 - 56 cm	56 - 58 cm	58 - 60 cm

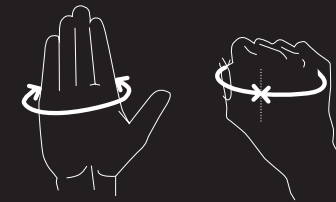
HELMETS

Size	J	S-M	L
CM	55-57 cm	57-59 cm	59-61 cm

GLOVES

Size	JS	JM	JL	S	M	L	XL
CM	10.2-12.7	12.7-15.2	15.2-17.5	17.5-19	19.0-21.4	21.4-24	24-26.7
Inches	4"-5"	5.0"-6.0"	6.0"-7.0"	7.0"-7.5"	7.5" - 8.5"	8.5"-9.5"	9.5"-10.5"

GLOVE SIZE GUIDE



Gul gloves are sized according to width.

To work out your size, we recommend you measure the dominant hand for example you right hand if you are right handed. As this will typically be larger.

Using a tape measure, wrap the tape around the hand just below knuckle this will be the widest part and make a fist. This should provide you with your size.

GUL WATERSPORTS LTD

Indian Queens, Cornwall, TR9 6TF

UKT: +44 (0) 1208 262 400

F: +44 (0) 1208 262 474

E: info@gul.com

GUL .COM